



WATERPOINT
ASSET MANAGEMENT



Sydney Olympic Park , NSW

 3  2  2

ENQUIRE WITHIN FOR \$140.00 DISCOUNT PER WEEK FOR 12 MONTHS!

This near new 3 bedroom apartment is available for lease. Featuring a spacious lounge / dining which flow onto a generous sized balcony, this apartment provides the flexibility to suit your needs

Situated in the highly sought after Sydney Olympic Park, its design offers a modern open plan, which flows from kitchen through to the lounge to winter garden.

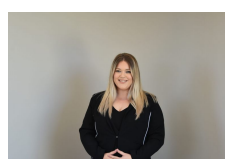
Luxury Finishes and Features

- Stainless Steel Appliances, including dishwasher & microwave
- Video Security Intercom
- Reverse Cycle Air Conditioning
- Tinted Double Glazed Glass

\$940 PER WEEK

Type: Apartment

Date Available: 10/10/2020



**Liana
Bedrossi**

on 05 765 800