



**WATERPOINT**  
ASSET MANAGEMENT



Sydney Olympic Park , NSW

3 2 2

## STUNNING 3 BEDROOM IS NOW AVAILABLE FOR LEASE!

A superb 3 bedroom is becoming available for lease. This spectacular apartment, features an open plan living and dining area which flow onto a spacious balcony.

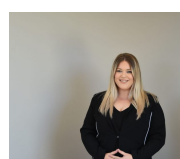
This apartment features fully ducted, reverse cycle air conditioning, VIDEO security intercom, basement security car parking with lift access to your floor only.

The attention to detail creates a lasting impression with superior finishes and a range of impressive inclusions, including:

- Multi-function dishwasher
- Fan forced multi-function oven
- 4 burner gas cooktop incl. wok burner

### ENQUIRE FOR \$95.00 PER WEEK DISCOUNT

**Type:** Apartment  
**Date Available:** 01/06/2021  
**Bond:** \$3780



**Liana  
Bedrossi**  
on 05 765 800



**Bianca  
Batbaatar**  
1300 872 888



# OPAL

TOWER AT SYDNEY OLYMPIC PARK

Apartment Type 3B1  
3 Bedroom + Study

Black Opal Levels  
3209 - 3209

## Specifications

internal area	119 sqm
balcony area	2 sqm
wintergarden area	15 sqm
total	136 sqm
carspaces	2
basement storage	yes



Drawn for the purposes of information only. The information is not intended to be used for any other purpose. The information is not intended to be used for any other purpose. The information is not intended to be used for any other purpose.



**3209/1 Brushbox Street, Sydney Olympic Park NSW**