



WATERPOINT
ASSET MANAGEMENT



Sydney Olympic Park , NSW



STUNNING TWO BEDROOM APARTMENT!

This modern two bedroom apartment is available for lease. Featuring a spacious lounge / dining which flow onto a generous sized balcony, this apartment provides the flexibility to suit your needs. Situated in the highly sought after suburb of Sydney Olympic Park, its design offers a modern open plan, which flows from kitchen through to the lounge and outdoor balcony.

Its spacious bathroom is complimented by a luxurious en-suite bathroom, clever study alcove and access to the large balcony.

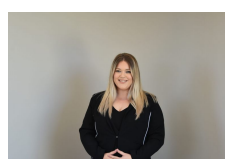
Where else can you walk to major sporting events, concerts, restaurants, trains, parkland and natural waterways.

Luxury Finishes and Features - Stainless Steel Appliances, including dishwasher & microwave - Video Security Intercom - Reverse Cycle Air Conditioning - Tinted Double Glazed Glass, reducing noise - Built-in Wardrobes - Gas Bayonet on balcony for BBQ, plus power & water - Washer / Dryer in Laundry - Luxury Kitchen with Stone Benches, Stone Splashbacks, Large

\$500 PER WEEK

Type: Apartment

Date Available: 26/10/2020



**Liana
Bedrossi**

on 05 765 800

www.waterpoint.com.au