



**WATERPOINT**  
ASSET MANAGEMENT



Meadowbank , NSW



## PERFECT STARTER | IDEAL LOCATION

This easy to maintain newly renovated, ground floor apartment features an open plan living and spacious design. Situated in the highly sought after and well established Shepherds Bay development this entry level apartment showcases a contemporary layout and modern finishes.

This property represents a great opportunity for an investor or owner occupier.

### Property Highlights

- Spacious Layout
- Freshly painted
- Brand new hybrid flooring
- Brand new block out blinds
- Private entry
- Air Conditioned

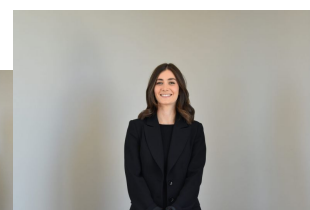
**505000**

**Type:** Apartment  
**Sold Date:** 23/07/2021  
**Land:** 82 m2  
**Council Rates:** \$307.00 p/q  
**Water Rates:** \$147.00 p/q



**Tim  
Lapham**

0424 509 961



**Danielle  
Gersbach**



All information contained herein is gathered from all sources we believe to be reliable. However we cannot guarantee its accuracy and interested parties should rely on their own enquiries.



**2/13 Bay Street, Meadowbank**

**2/13 Bay Drive, Meadowbank NSW**