



WATERPOINT
ASSET MANAGEMENT



Sydney Olympic Park , NSW



Spacious 2 bedroom apartment - NOW AVAILABLE!

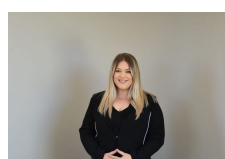
Situated on the 10th floor and featuring stunning designer finishes, this apartment will sure impress. Featuring a spacious parking & storage, you must be quick to secure this property in one of the newest and fast growing suburbs in Sydney.

Some Luxury Finishes and Features include;
Stainless Steel Appliances, including dishwasher
Security Video Intercom
Air Conditioning
Study Area / Storage Cage
2 min to Sydney Olympic Park train Station
4 min to Rhodes shopping centre
Restaurants and parklands located with 100m from this spectacular apartment

\$540 PW

Type: Apartment

Date Available: 22/12/2020



**Liana
Bedrossi**

on 05 765 800