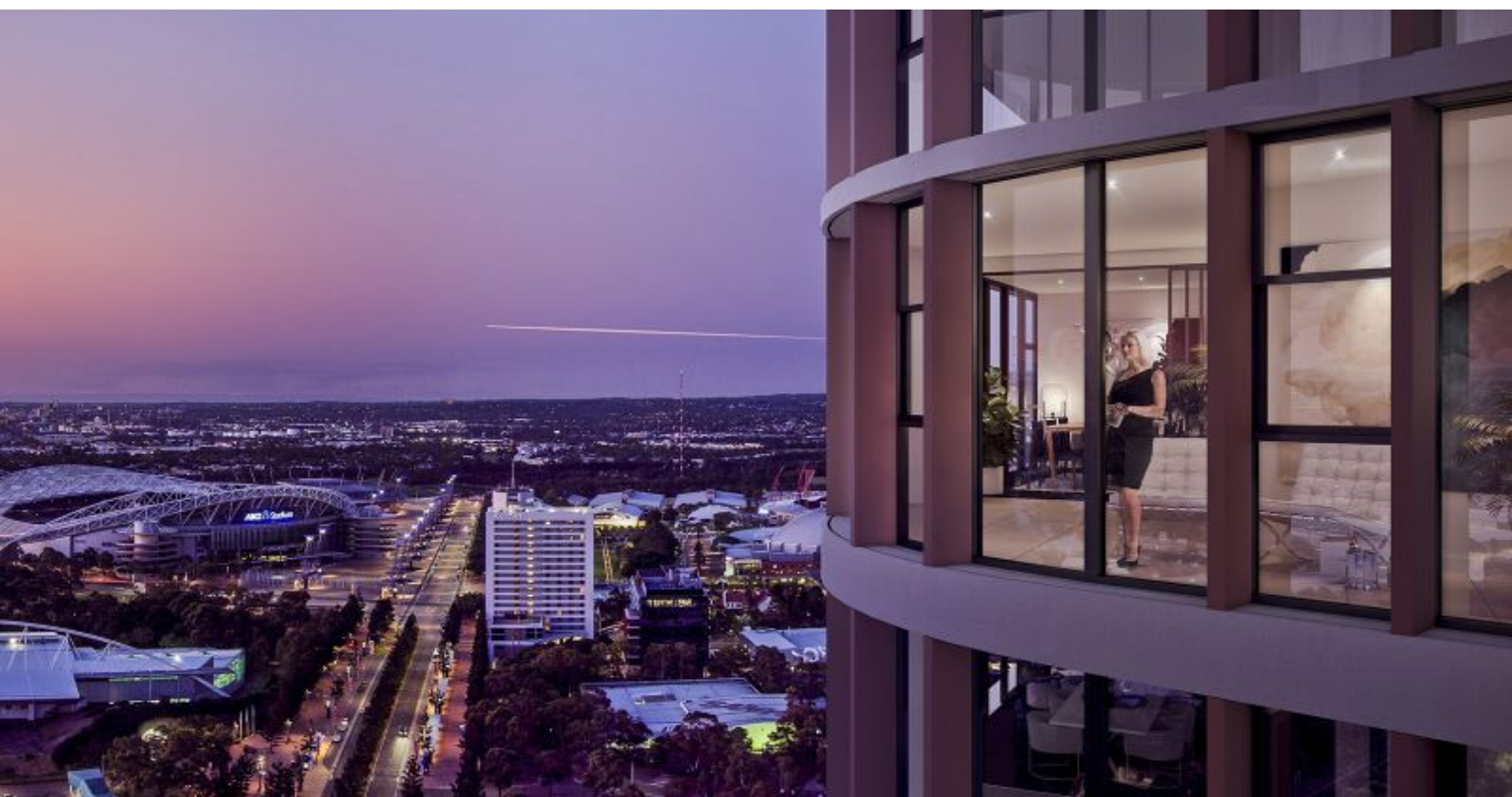




**WATERPOINT**  
ASSET MANAGEMENT



Sydney Olympic Park , NSW



1



1

## The ultimate in luxury and location - Boomerang on Olympic Boulevard

Welcome to a brand new selection of 1 bedroom spacious luxury apartments with 38 levels of sweeping panoramic views from the Blue Mountains to Sydney CBD.

Outstanding features, benefits and opportunities include:

Luxuriously spacious 1-4 bedroom layouts with panoramic 360 degree views of Sydney Harbour and CBD, Homebush Bay, Bicentennial Park and the Blue Mountains

All north facing apartments with 100% solar access

Perfectly positioned on Olympic Boulevard, just metres from world class sporting and entertainment facilities, restaurants, cafes and bars

Surrounded by 430 hectares of parkland, 35km of walk/bike paths, numerous parks and playgrounds

Easy access to 2 train stations, buses and ferry

## First residential apartments on Olympic Boulevard

Type: Apartment

**Waterpoi  
nt Asset  
Managem  
ent**

[www.waterpoint.com.au](http://www.waterpoint.com.au)