



Sydney Olympic Park , NSW



## Glamorous Views & Prime Location

Situated on the 6th floor and featuring glamorous views over Bi-Centennial Park and towards the Harbour Bridge, this apartment will sure impress.

Featuring a generous 54 sqm of internal living which flows onto a 7 sqm winter garden, you must be quick to secure this property.

Some Luxury Finishes and Features include;  
Stainless Steel Appliances, including dishwasher  
Security Video Intercom  
Air Conditioning

1 min to Sydney Olympic Park train Station

4 min to Rhodes shopping centre

Restaurants and parklands located with 500m from this spectacular apartment?

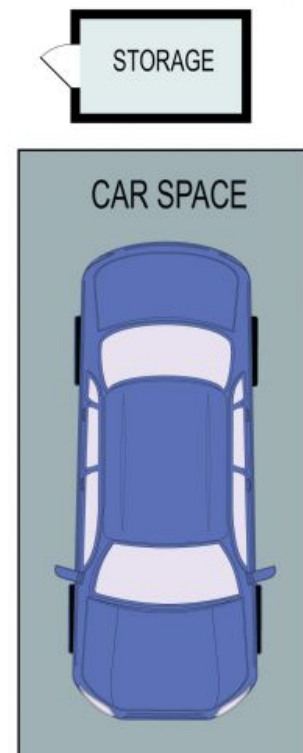
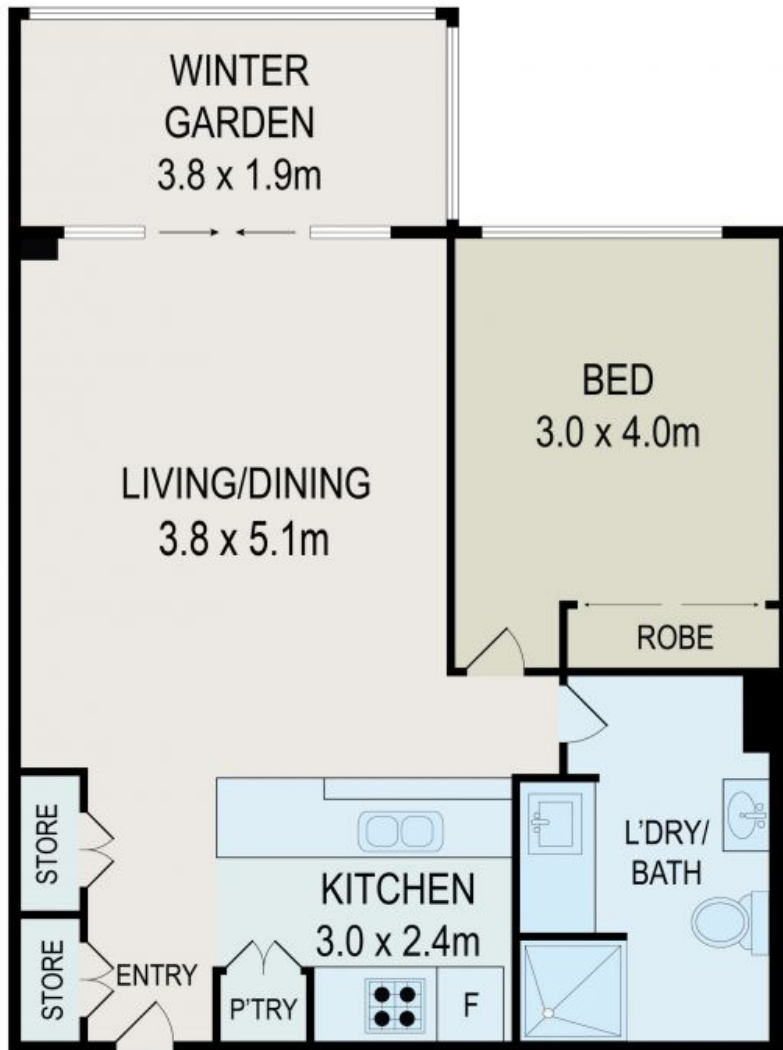
## Contact Agent | By Negotiation

**Type:** Apartment  
**Council Rates:** \$266.00 p/q  
**Water Rates:** \$147.00 p/q  
**Strata Rates:** \$1,103.00 p/q



**Tim  
Lapham**

0424 509 961



All information contained herein is gathered from all sources we believe to be reliable. However we cannot guarantee its accuracy and interested parties should rely on their own enquiries.



608/11 Australia Avenue, Sydney Olympic Park

11 Australia Avenue, Sydney Olympic Park NSW