



WATERPOINT
ASSET MANAGEMENT



WATERPOINT
ASSET MANAGEMENT



WATERPOINT



WATERPOINT



WATERPOINT

Meadowbank , NSW

2 2 1

Huge Floor Plan, with Substantial Indoor/Outdoor Entertaining Space

If size matters, then this is the unit for you! One of the largest 2-bedroom floor plans in the Waterpoint complex, complete with two generous outdoor entertaining balconies, makes it a perfect choice.

- Corner position with huge floor plan
- 2 Spectacularly large balconies
- Gourmet gas kitchen, generous storage.
- Master with ensuite, lift access
- Internal laundry, secure parking
- Ducted reverse A/C, video security entrance
- Steps to train, ferry, cafes and shopping

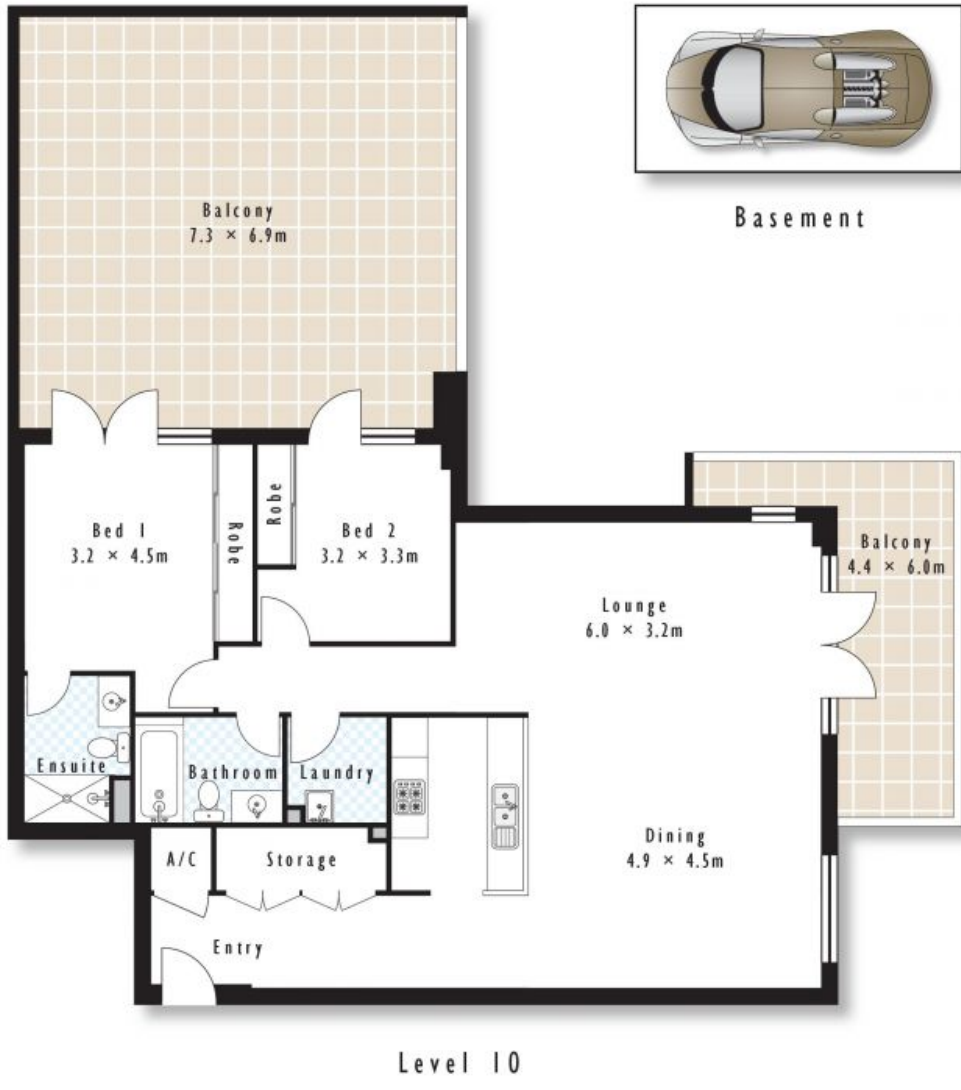
\$600 pw

Type: Apartment
Date Available: 13/04/2021



Claire Palombo
0468 518 594

Danielle Gersbach



Internal area	105m ²
External area	64m ²
Total area	169m ²

Level 10, 32/7 Bay Drive, Meadowbank

Disclaimer: Every precaution has been taken to establish the accuracy of the above information, but does not constitute any representation by the vendor, agent or artist of this document.

WATERPOINT[®]
ASSET MANAGEMENT

32/7 Bay Drive, Meadowbank NSW