



Meadowbank , NSW



LOCATION | LAYOUT | LIVING

This easy to maintain, ground floor apartment features an open plan living and spacious design. Situated in the highly sought after and well-established Shepherds Bay development this entry level apartment showcases a contemporary layout and modern finishes.

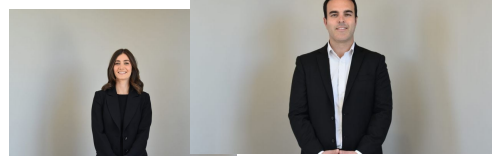
This property represents a great opportunity for an investor or owner occupier.

Property Highlights

- Spacious Layout
- Private entry and enclosed balcony
- Air Conditioned
- Internal Laundry
- Open plan living
- Styled kitchen with stainless steel appliances.
- Large Bathroom

530000

Type: Apartment
Sold Date: 13/08/2021
Land: 102 m2
Council Rates: \$301.00 p/q
Water Rates: \$147.00 p/q
Strata Rates: \$



Danielle Gersbach

Tim Lapham

0424 509 961



All information contained herein is gathered from all sources we believe to be reliable. However we cannot guarantee its accuracy and interested parties should rely on their own enquiries.



1A/23 Angas Street, Meadowbank

1A/23 Angas Street, Meadowbank NSW