



Meadowbank , NSW

 2  2  1

## SPACIOUS DESIGN | PREMIUM LOCATION

Located in the sought after Shepherds Bay development, this spectacular 2-bed apartment is ideal as a permanent residence or investment opportunity alike. Boasting a modern open plan configuration and a large East/West flow through configuration, this property is perfect for those wanting an effortless, low maintenance lifestyle.

Featuring soft natural tones and a premium location, this apartment will not last long!

### PROPERTY FEATURES

- Open plan design
- Spacious fully equipped kitchen with stone benches and stainless steel appliances
- Large entertainers balcony
- Secure undercover parking

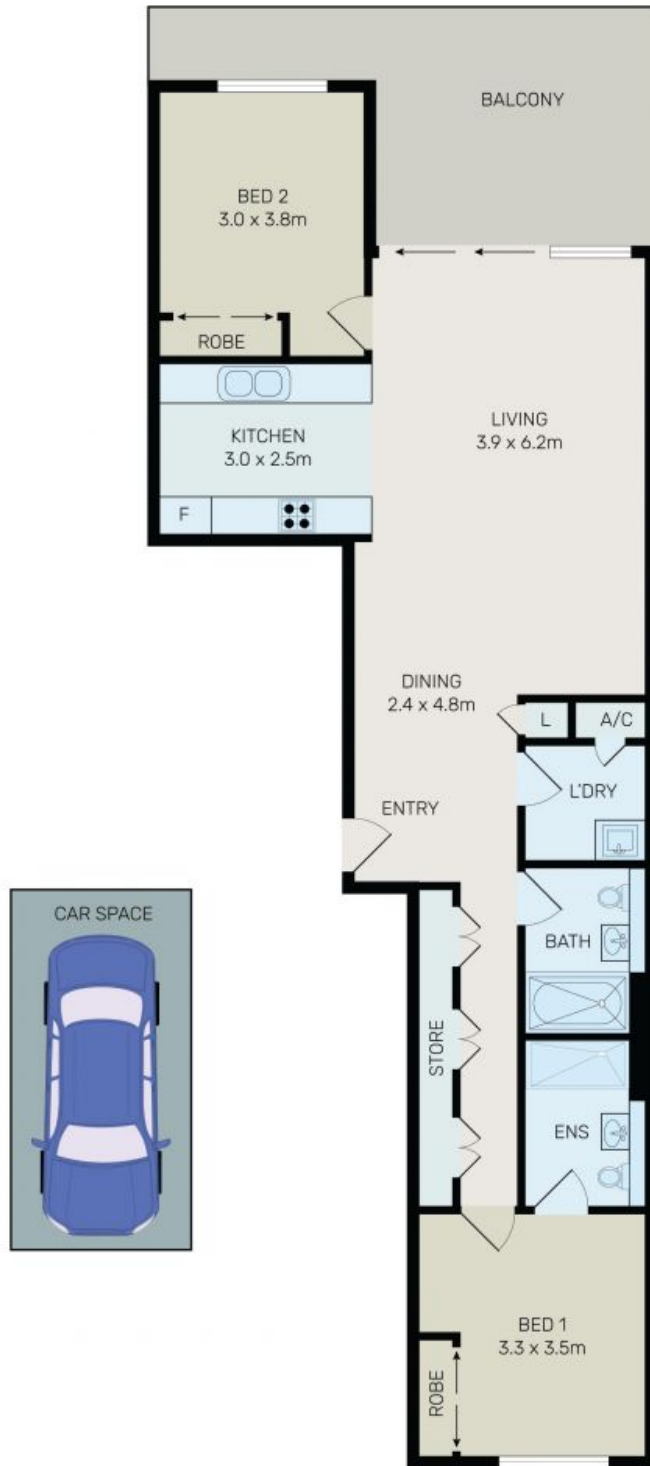
**765000**

**Type:** Apartment  
**Sold Date:** 23/07/2021  
**Land:** 100 m2  
**Council Rates:** \$309.00 p/q  
**Water Rates:** \$145.00 p/q



**Tim Lapham**  
0424 509 961

**Danielle Gersbach**  
0413 101 352



All information contained herein is gathered from all sources we believe to be reliable. However we cannot guarantee its accuracy and interested parties should rely on their own enquiries.



## 1/19 Angas Street, Meadowbank

1/19 Angas Street, Meadowbank NSW