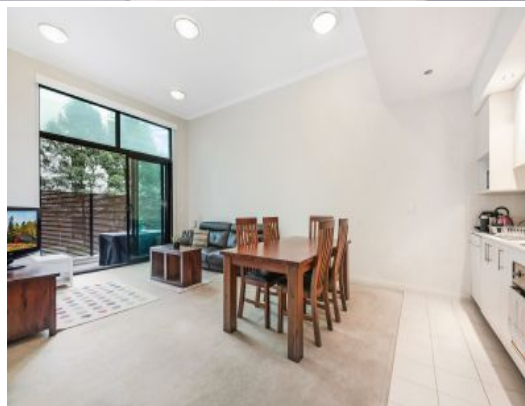
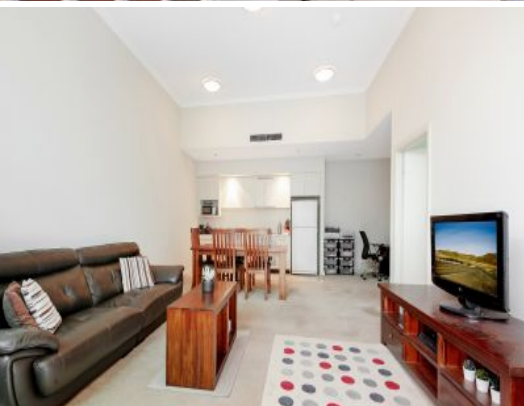
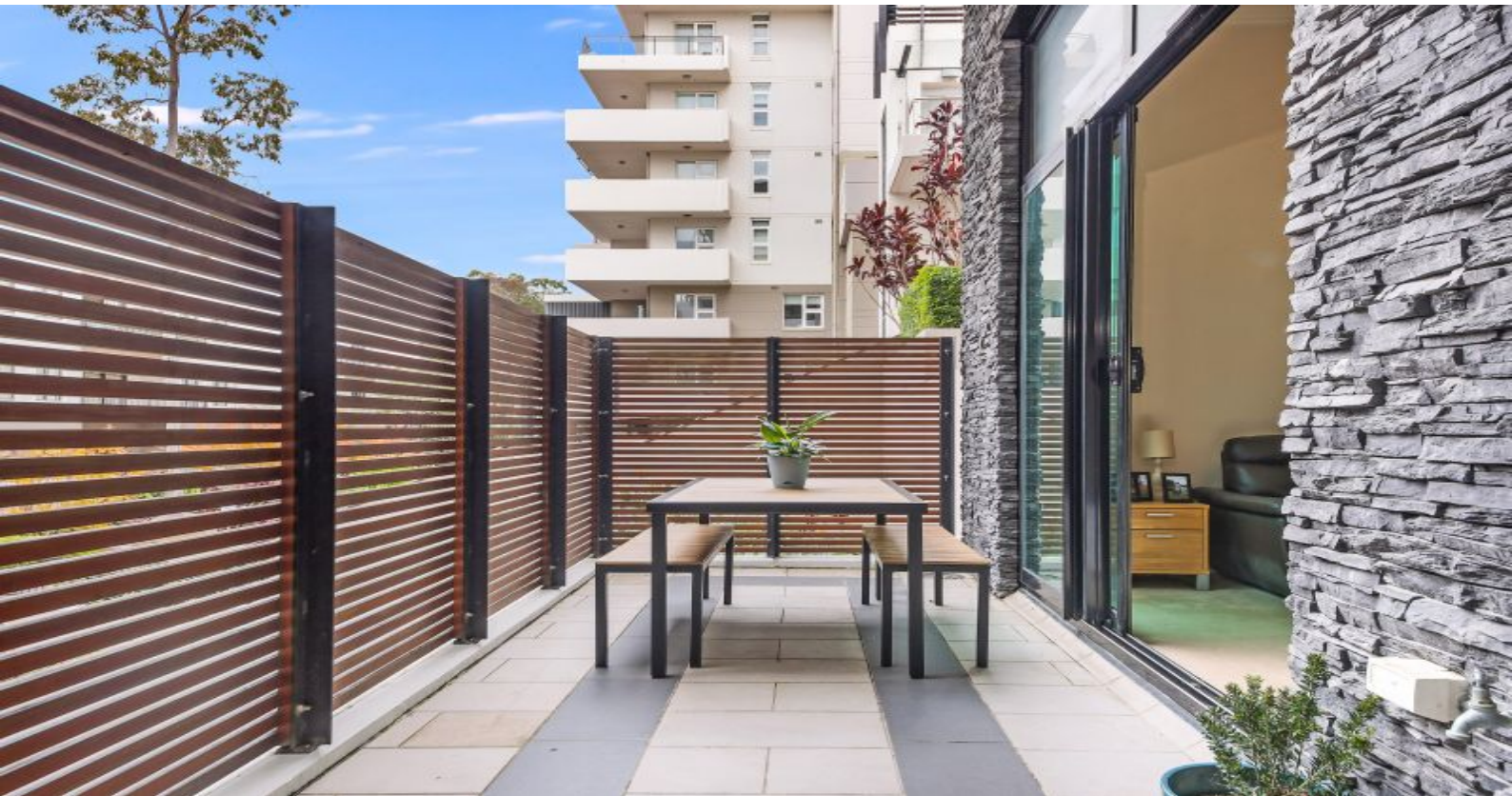




WATERPOINT
ASSET MANAGEMENT



Meadowbank , NSW



Palatial 93sqm of Indoor/Outdoor Living!!

Centrally located in the heart of Shepherds Bay with train, ferry and shopping at your doorstep helps make a lifestyle of absolute convenience.

This smartly presented property offers easy-care living and palatial 93sqm floor plan in a modern security building. It makes an ideal first home or investment with sleek interiors and quality appointments.

Approximately 93sqm of Indoor/outdoor living space
Gourmet gas kitchen with stainless appliances
Light filled open layout with soaring 3.9m ceilings
Large bedroom with built-in, Bonus Storage Cage
Contemporary bathroom, internal laundry
Secure car space, video security access
footsteps to cafes, shopping, ferry and train station
Waterfront complex 25 minutes to CBD

615000

Type: Apartment
Sold Date: 22/11/2021
Council Rates: \$303.00 p/q
Water Rates: \$166.00 p/q
Strata Rates: \$1,026.00 p/q

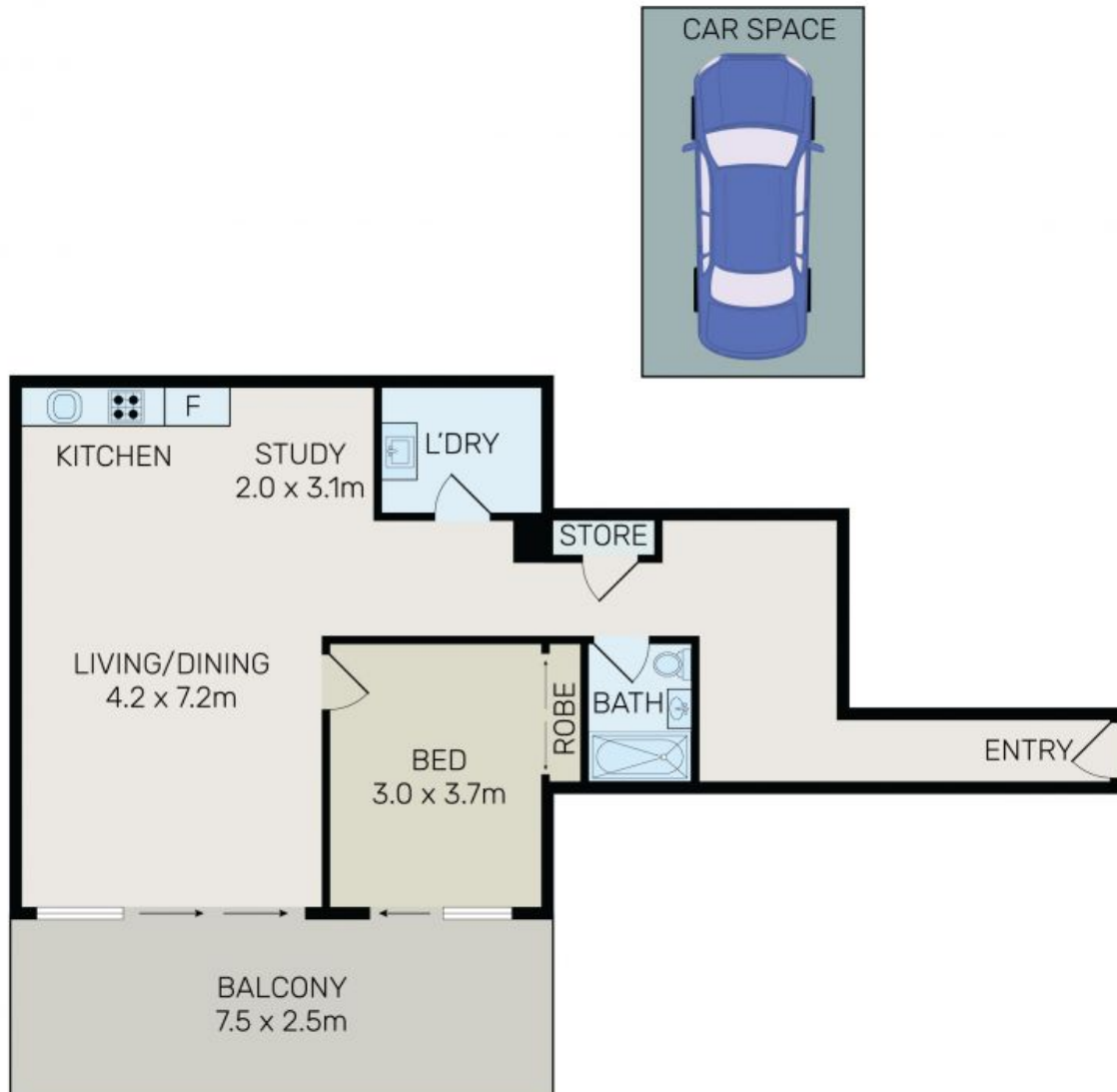


**Tim
Lapham**

0424 509 961



**Danielle
Gersbach**



0 1 2 3 4 5

All information contained herein is gathered from all sources we believe to be reliable. However we cannot guarantee its accuracy and interested parties should rely on their own enquiries.



3/21 Angas Street, Meadowbank

3/21 Angas Street, Meadowbank NSW