



WATERPOINT
ASSET MANAGEMENT



Sydney Olympic Park , NSW

2 2 1

TILED THROUGHOUT!

This Modern 2 bedroom apartment is available for lease. Featuring a spacious lounge / dining which flow onto a generous sized balcony, this apartment provides the flexibility to suit your needs

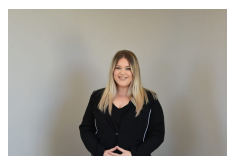
Situated in the highly sought after Sydney Olympic Park, its design offers a modern open plan, which flows from kitchen through to the lounge and outdoor balcony.

This is one of the first residential estate in this vibrant city centre and will surely become one of the nations most exclusive places to reside. Where else can you walk to major sporting events, concerts, restaurants, trains, parkland and natural waterways.

Luxury Finishes and Features

\$540 per week

Type: Apartment
Date Available: 01/12/2021
Bond: \$2160



**Liana
Bedrossi**
on 05 765 800