



WATERPOINT
ASSET MANAGEMENT



Sydney Olympic Park , NSW



PERFECT STARTER

Situated on the 6th floor and featuring stunning designer finishes, this apartment will sure impress. Featuring a spacious 62 sqm internally and 17 sqm externally + parking, you must be quick to secure this property in one of the newest and fast growing suburbs in Sydney.

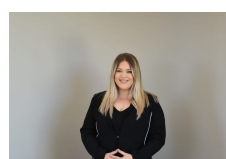
Some Luxury Finishes and Features include;

- Stainless Steel Appliances, including dishwasher
- Security Video Intercom
- Air Conditioning
- Study Area / Storage Cage
- Blue Chip Investment Rental Return \$ 460 - \$480 pw
- 1 min to Sydney Olympic Park train Station
- 4 min to Rhodes shopping centre
- Restaurants and parklands located with 500m from this spectacular apartment

\$460 PER WEEK

Type: Apartment

Date Available: 20/11/2021



**Liana
Bedrossi**

on 05 765 800