



**WATERPOINT**  
ASSET MANAGEMENT



Sydney Olympic Park , NSW



## STUNNING TWO BEDROM ON LEVEL 23!

This immaculate 2 Bedroom apartment, is being offered for lease. Comprising of a spacious open plan living, which flows onto a generous size balcony this apartment will not last long.

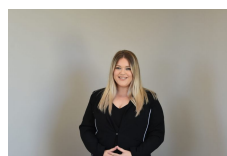
Comprising of quality features such as;

- Air Conditioned
- Double Glazing
- Video Intercom and Secure Parking
- Four minute level walk to Station
- Waterside Location
- Regional Shopping Centre nearby
- Gym

This apartment has it all!!

**\$540 per week**

**Type:** Apartment  
**Date Available:** 24/11/2021  
**Bond:** \$2160



**Liana  
Bedrossi**  
on 05 765 800