



WATERPOINT
ASSET MANAGEMENT



Sydney Olympic Park , NSW



3



2



2

Northeast Corner Position with Stunning Views to City & Harbour Bridge

This spectacular northeast facing apartment provides a perfect corner position, which offers you panoramic views to the City and Harbour Bridge.

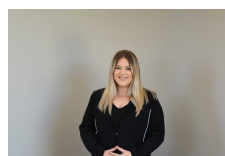
Located a short stroll from the parks world class sporting venues, train station and restaurant precinct.

- 120sqm of Living Space
- Near New with prized North facing corner position
- Located on the 11th Floor, Panoramic views towards the city
- Dramatic floor to ceiling windows, all double glazed
- Stone top kitchen with European appliances
- Contemporary bathrooms, internal laundry
- Secure car spaces, video security access, storage cage

\$710 PER WEEK

Type: Apartment

Date Available: 15/12/2021



**Liana
Bedrossi**

on 05 765 800