



**WATERPOINT**  
ASSET MANAGEMENT



Meadowbank , NSW



## LIGHT & SPACIOUS | 94 SQM INTERNAL

Located in the sought after Shepherds Bay development, this prime positioned 2-bed apartment is ideal as a permanent residence or investment opportunity alike. Boasting a modern open plan configuration and spectacular podium view towards Parramatta River, this property is perfect for those wanting an effortless, low maintenance lifestyle. Featuring soft natural tones and a premium location, this apartment will not last long!

### PROPERTY FEATURES

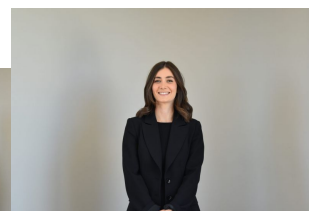
- Open plan design
- Spacious fully equipped kitchen with stone benches and stainless steel appliances
- Large entertainers balcony
- Secure undercover parking

**821000**

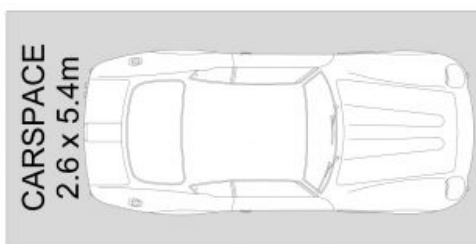
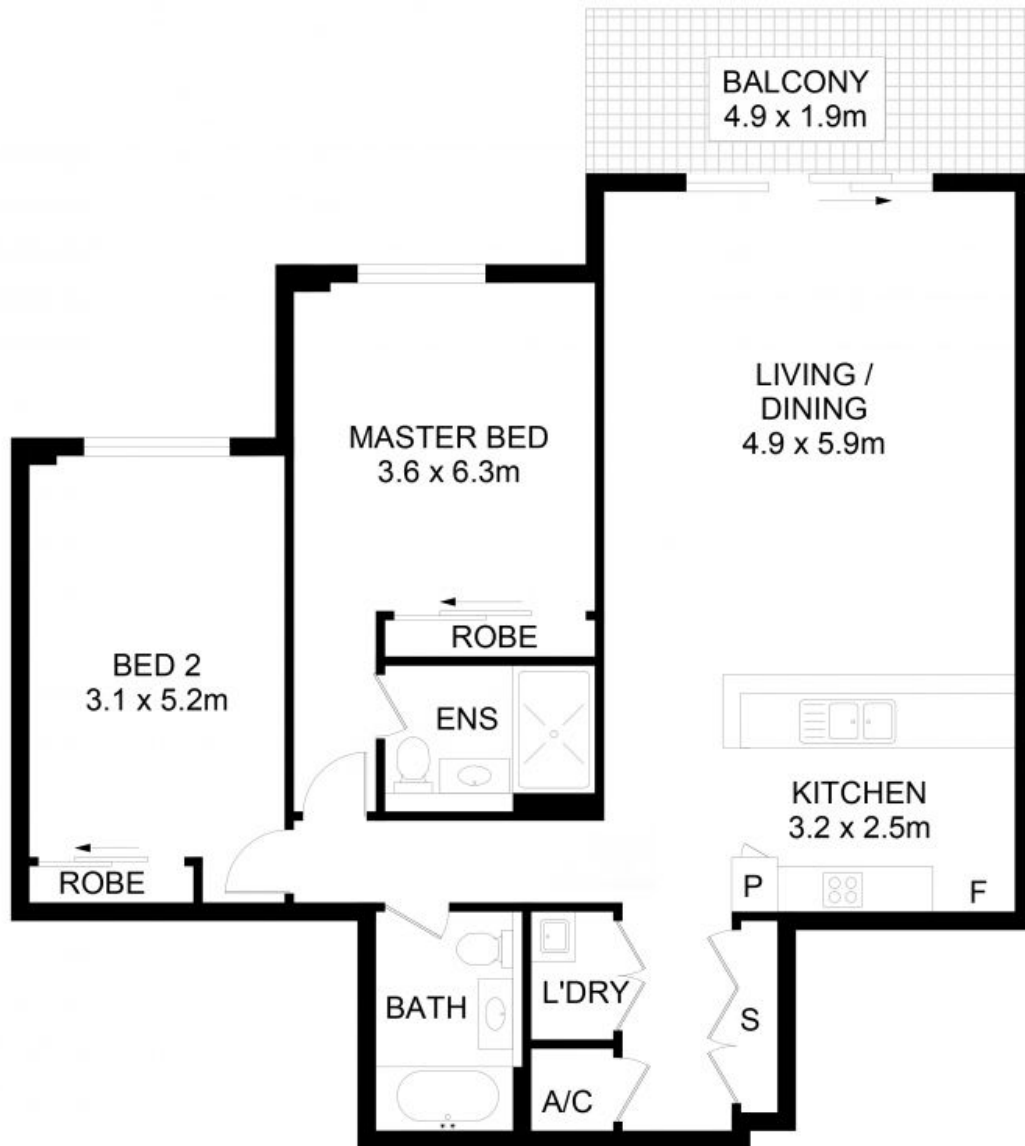
**Type:** Apartment  
**Sold Date:** 09/02/2022  
**Council Rates:** \$317.00 p/q  
**Water Rates:** \$150.00 p/q  
**Strata Rates:** \$1,638.00 p/q



**Tim  
Lapham**  
0424 509 961



**Danielle  
Gersbach**



## 25/13 Bay Drive, Meadowbank

DISCLAIMER: No liability for the accuracy of details contained within our floor plans. All plans are drawn and also checked to the best of our ability, however information contained in our floor plans such as area calculations are approximate, and have not been surveyed or drawn to scale. Our floor plans are for representational purposes only and should be used as such. Do not attempt to refer to our floor plans for structural or detailed information.



**WATERPOINT**

**25/13 Bay Drive, Meadowbank NSW**