



Meadowbank , NSW

 2  2  1

Spacious renovated Corner Unit with Wrap Around Entertainers Balcony

This sophisticated urban haven boasts a sleek modern open plan design, with quality finishes and an enviable corner position. It is conveniently placed within the prominent Waterpoint complex with shopping and transport at your doorstep.

- Wonderfully light open plan living/dining area
- Wide-fronted glass doors open onto balcony
- Impressive courtyard outlook, reverse A/C
- Ultra modern granite gas kitchen
- Large bedrooms with direct alfresco access
- Master with ensuite , internal laundry and storage
- Landscaped grounds, on-site supermarket
- Accessible location, 25 minutes to the CBD
- Footsteps to shops, cafes, train and ferry

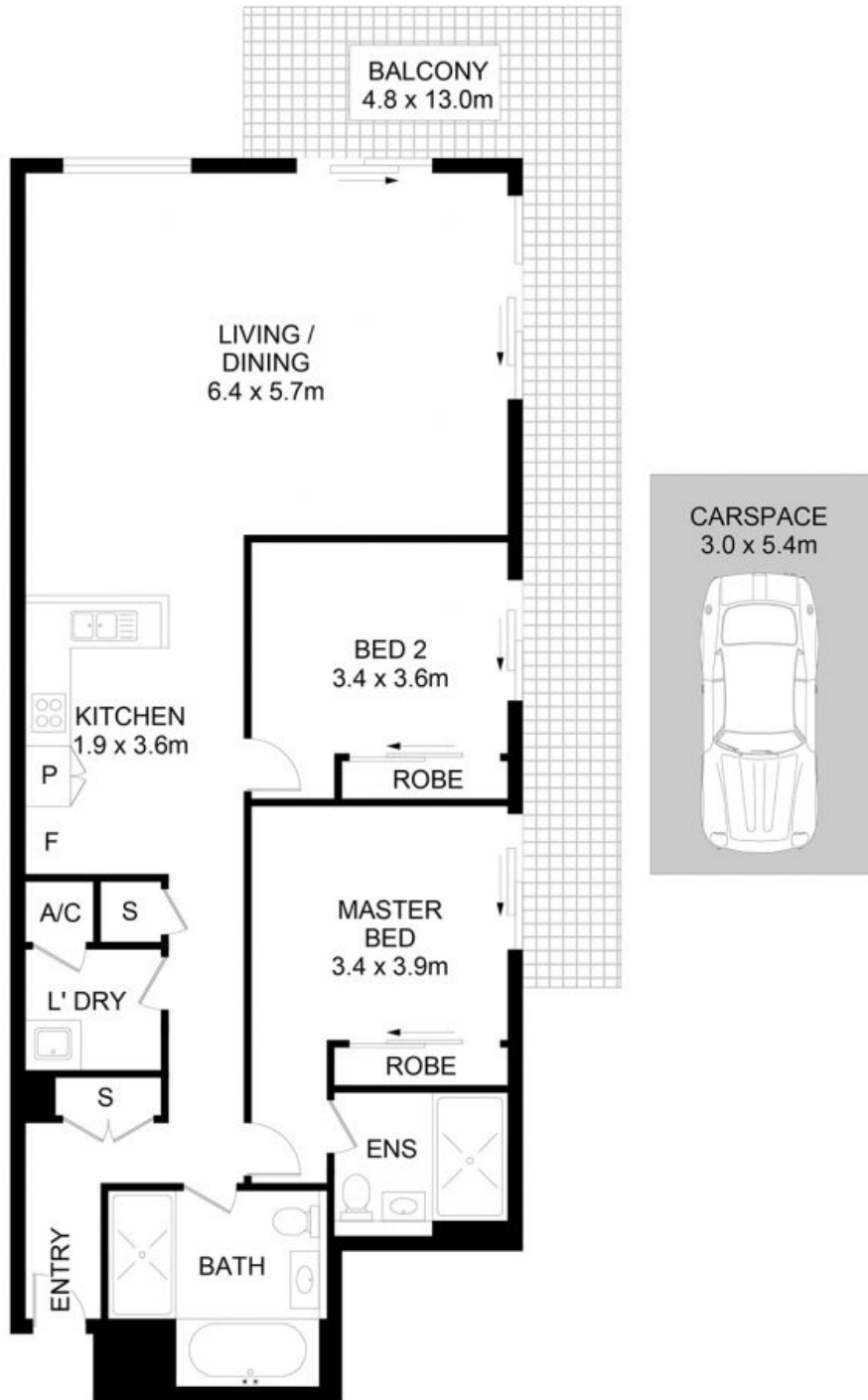
SOLD!

Type: Apartment
Sold Date: 18/02/2022
Council Rates: \$318.00 p/q
Water Rates: \$150.00 p/q
Strata Rates: \$1,585.00 p/q



Tim Lapham
0424 509 961

Danielle Gersbach
0413 101 352



6/9 Bay Drive, Meadowbank

DISCLAIMER: No liability for the accuracy of details contained within our floor plans. All plans are drawn and also checked to the best of our ability, however information contained in our floor plans such as area calculations are approximate, and have not been surveyed or drawn to scale. Our floor plans are for representational purposes only and should be used as such. Do not attempt to refer to our floor plans for structural or detailed information.



WATERPOINT

6/9 Bay Drive, Meadowbank NSW