



WATERPOINT
ASSET MANAGEMENT



Sydney Olympic Park , NSW



SUN FILLED TWO BEDROOM APARTMENT

Situated in the heart of Sydney Olympic Park and surrounded by hectares of parklands, playgrounds, restaurants and world class sporting venues, these spectacular apartments will be the envy of many and are truly breathtaking.

Luxury Finishes and Features include

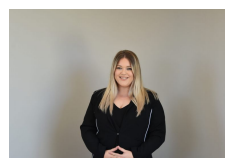
- European Stainless Steel Appliances
- Video Security Intercom
- Designer Kitchens with Stone Benches & Large Drawer Sets
- Built-in Wardrobes
- Air-Conditioning
- Internal Storage
- Uninterrupted Views

Building Features Include

\$580 PER WEEK

Type: Apartment

Date Available: 18/12/2021



**Liana
Bedrossi**

02 95 765 800