



Ermington , NSW
 2  2  1

Massive living space and courtyard!!

Located in one of the most highly sought after developments in Ermington, this superb 2 bedroom apartment will sure impress!

Situated on the 1st Floor and spanning the south / west corner of this building, this apartment features an impressive floorplan!

Representing quality design & living innovation, this modern layout comprises of an open plan living / entertaining area, which flows from a gourmet kitchen to dual balconies perfect for entertaining.

The generous sized bedrooms capture maximum natural light and provide privacy for guests or family.

Other Luxury Finishes and Features include;
- Stainless Steel Appliances, including dishwasher & microwave

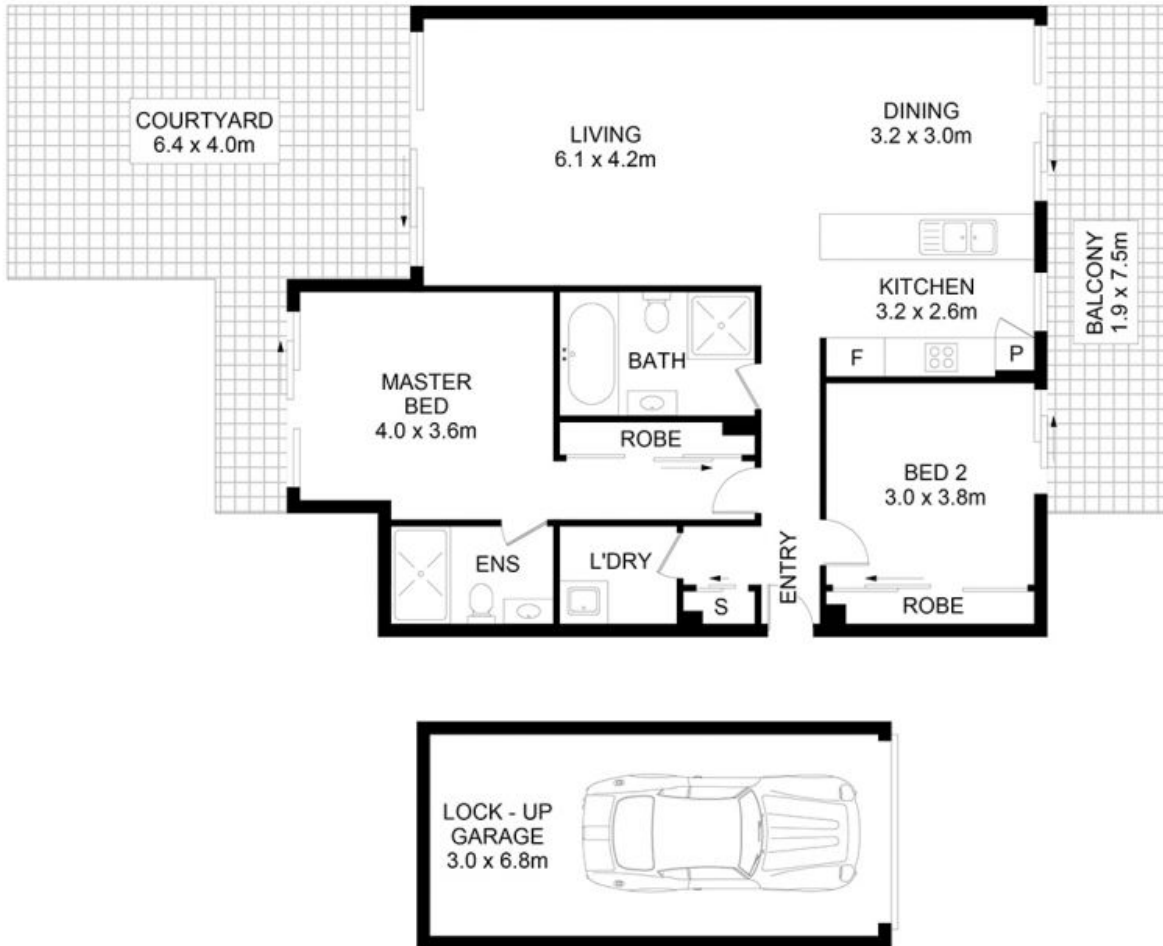
Sold

Type: Apartment
Sold Date: 02/02/2022
Council Rates: \$300.00 p/q
Water Rates: \$150.00 p/q
Strata Rates: \$723.00 p/q



Tim Lapham
0424 509 961

Danielle Gersbach
0413 101 352



14/2-10 Nordica Street, Ermington

DISCLAIMER: No liability for the accuracy of details contained within our floor plans. All plans are drawn and also checked to the best of our ability, however information contained in our floor plans such as area calculations are approximate, and have not been surveyed or drawn to scale. Our floor plans are for representational purposes only and should be used as such. Do not attempt to refer to our floor plans for structural or detailed information.



14/2-10 Nordica Street, Ermington NSW