



WATERPOINT
ASSET MANAGEMENT



Sydney Olympic Park , NSW



STUNNING 2 BEDROOM FOR LEASE!

This immaculate 2 Bedroom apartment, is being offered for lease. Comprising of a spacious open plan living, which flows onto a generous size balcony this apartment will not last long.

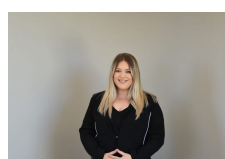
Comprising of quality features such as;

- Air Conditioned
- Double Glazing
- Video Intercom and Secure Parking
- Four minute level walk to Station
- Waterside Location
- Regional Shopping Centre nearby
- Gym

This apartment has it all!!

\$540 per week

Type: Apartment
Date Available: 10/02/2022
Bond: \$2160



**Liana
Bedrossi**
on 05 765 800