



*DIGITALLY FURNISHED



Meadowbank , NSW



SPACIOUS DESIGN | PREMIUM LOCATION | 124 SQM OF LIVING

Located in the sought after Shepherds Bay development, this spectacular 2-bed apartment is ideal as a permanent residence or investment opportunity alike. Boasting a modern open plan configuration and a supersized living area, this property is perfect for those wanting an effortless, low maintenance lifestyle.

Featuring soft natural tones and a premium location, this apartment will not last long!

PROPERTY FEATURES

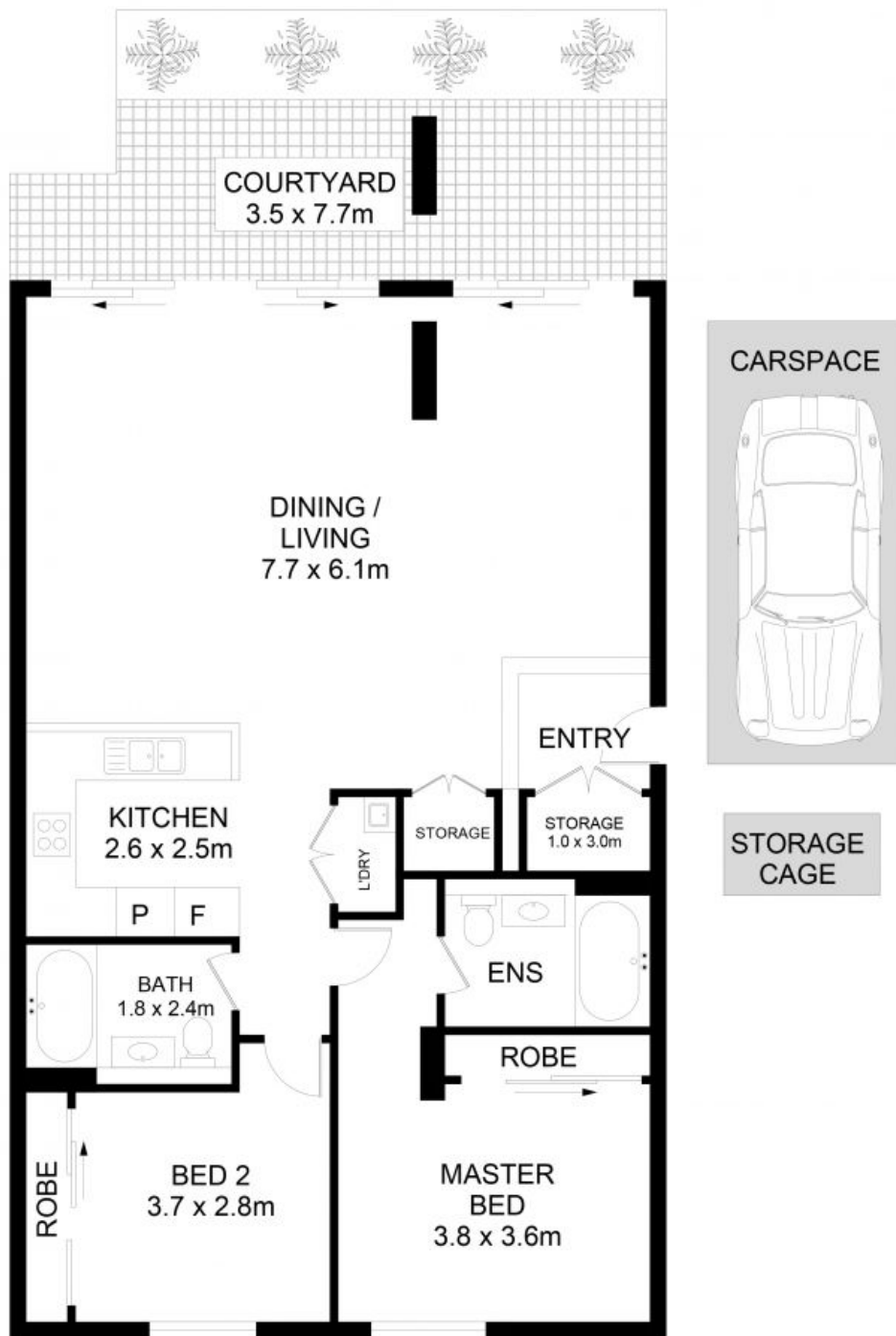
- Open plan design
- Spacious fully equipped kitchen with stone benches and stainless steel appliances
- Large entertainers courtyard and off street access

\$790,000

Type: Apartment
Sold Date: 13/04/2022
Council Rates: \$315.00 p/q
Water Rates: \$160.00 p/q



Tim Lapham
 0424 509 961



44/2 Underdale Lane, Meadowbank

DISCLAIMER: No liability for the accuracy of details contained within our floor plans. All plans are drawn and also checked to the best of our ability, however information contained in our floor plans such as area calculations are approximate, and have not been surveyed or drawn to scale. Our floor plans are for representational purposes only and should be used as such. Do not attempt to refer to our floor plans for structural or detailed information.



44/2 Underdale Lane, Meadowbank NSW