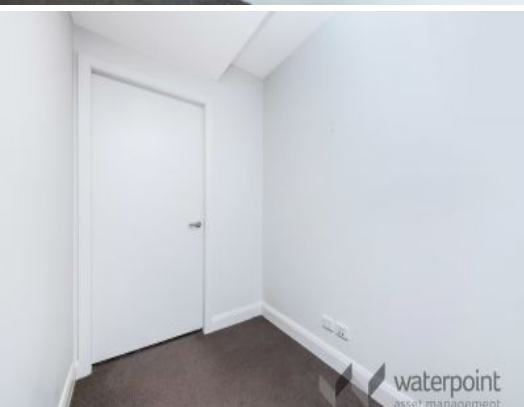




WATERPOINT
ASSET MANAGEMENT



Sydney Olympic Park , NSW



DO NOT MISS THIS!

Enjoy the luxury and elegance of this Sydney Olympic Park apartment. Spacious and smart, this apartment offers modern features including gourmet kitchen, stylish bathroom, security building access and loads of storage. It has elevated views across the Park and enjoys abundant natural light.

Security parking and excellent access to public transport makes this apartment a must to inspect.

Discover the magic of Sydney Olympic Park and enjoy the convenience of trains 2 minutes away, bus stop at the door, and connecting Sydney ferry services. Modern living in the heart of Sydney.

Contemporary finishes:

- + Large bedroom with full size built in robe
- + Luxuriously appointed bathroom

\$480 PER WEEK

Type: Apartment

Date Available: 21/03/2022

**Waterpoi
nt Asset
Managem
ent**

www.waterpoint.com.au