



Sydney Olympic Park , NSW

 2  2  1

Premium Location | Quality Designer Finishes

Located on the 11th floor of the spectacular Australia Towers building, this luxurious 2-bedroom apartment has premium designer finishes and a sunny northwest facing position accented with panoramic views towards Parramatta & the Blue Mountains. Located in the heart of Sydney Olympic Park, mere footsteps from the parks world class sporting venues, train station and restaurant precinct.

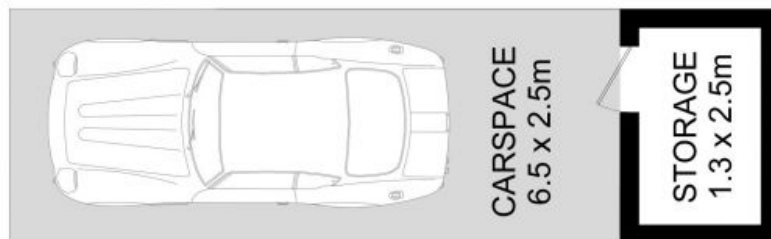
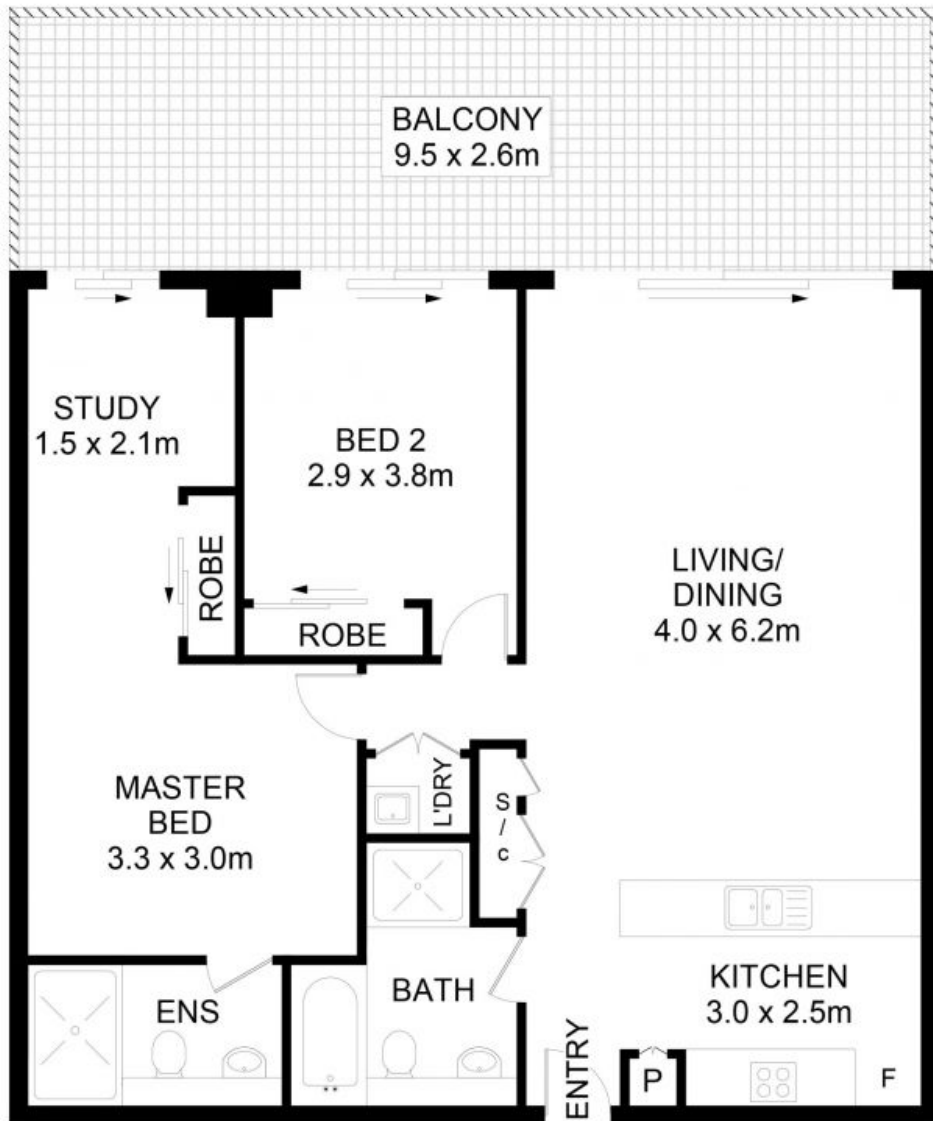
- High-end designer finishes
- Views to Parramatta & Blue Mountains
- Double glazed floor to ceiling windows
- Stone top kitchen with European appliances
- Contemporary bathrooms, internal laundry, storage cage
- Secure car space, video security access
- Footsteps to restaurants, shopping and train station
- Seconds from world class sporting venues

By Negotiation | Contact Agent

Type: Apartment
Council Rates: \$315.00 p/q
Water Rates: \$160.00 p/q
Strata Rates: \$1,485.00 p/q



Tim Lapham
0424 509 961



1102/11 Australia Avenue, Sydney Olympic Park

DISCLAIMER: No liability for the accuracy of details contained within our floor plans. All plans are drawn and also checked to the best of our ability, however information contained in our floor plans such as area calculations are approximate, and have not been surveyed or drawn to scale. Our floor plans are for representational purposes only and should be used as such. Do not attempt to refer to our floor plans for structural or detailed information.



1102/11 Australia Avenue, Sydney Olympic Park NSW