



**WATERPOINT**  
ASSET MANAGEMENT



Sydney Olympic Park , NSW



## Premium Location | Quality Designer Finishes

Located on the 11th floor of the spectacular Australia Towers building, this luxurious 2-bedroom apartment has premium designer finishes and a sunny northwest facing position accented with panoramic views towards Parramatta & the Blue Mountains. Located in the heart of Sydney Olympic Park, mere footsteps from the parks world class sporting venues, train station and restaurant precinct.

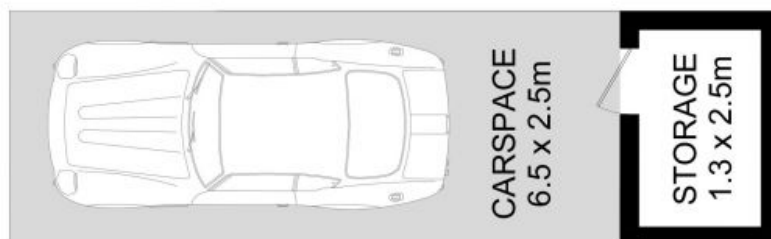
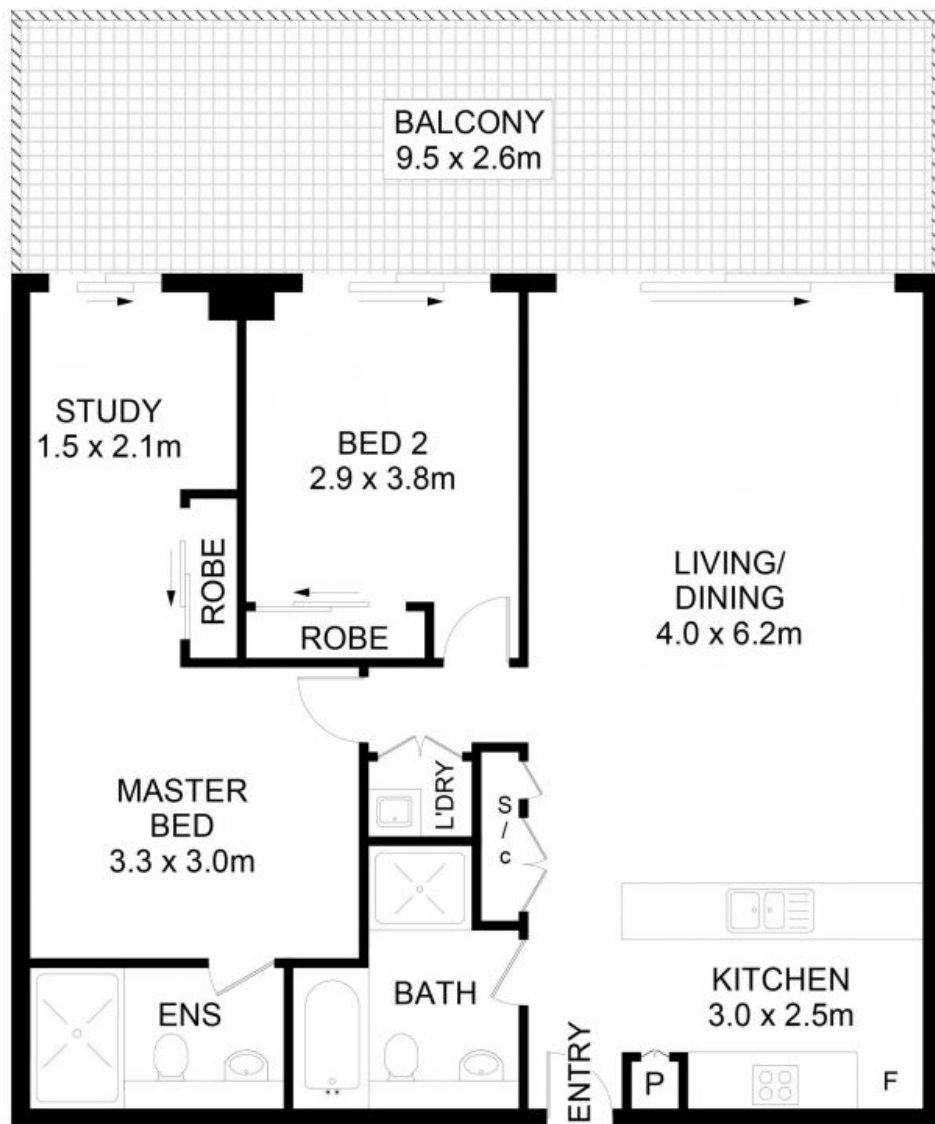
High-end designer finishes  
Views to Parramatta & Blue Mountains  
Double glazed floor to ceiling windows  
Stone top kitchen with European appliances  
Contemporary bathrooms, internal laundry, storage cage  
Secure car space, video security access  
Footsteps to restaurants, shopping and train station  
Seconds from world class sporting venues

**\$692,000**

**Type:** Apartment  
**Sold Date:** 17/08/2022  
**Council Rates:** \$315.00 p/q  
**Water Rates:** \$160.00 p/q  
**Strata Rates:** \$1,485.00 p/q



**Tim  
Lapham**  
0424 509 961



## 1102/11 Australia Avenue, Sydney Olympic Park

DISCLAIMER: No liability for the accuracy of details contained within our floor plans. All plans are drawn and also checked to the best of our ability, however information contained in our floor plans such as area calculations are approximate, and have not been surveyed or drawn to scale. Our floor plans are for representational purposes only and should be used as such. Do not attempt to refer to our floor plans for structural or detailed information.



**1102/11 Australia Avenue, Sydney Olympic Park NSW**