



WATERPOINT
ASSET MANAGEMENT



Meadowbank , NSW



Ideal Starter | Super Sized Bedroom

Superb opportunity to secure this terrific one bedroom apartment in one of the most highly sought after developments in Meadowbank.

Situated on the 3rd floor and featuring a generous 65 sqm on living space, this apartment is perfectly positioned in the Waterpoint Shepherds Bay development will sure impress.

Features Include:

- Gourmet gas kitchen with stainless appliances
- Secure parking, lift access, internal storage
- Contemporary bathroom, internal laundry
- Secure car space, security access, double glazed windows
- Potential rent of \$450 per week, pet friendly development
- Footsteps to restaurants, ferry and train station
- IGA, F45 and other retail shops on-site

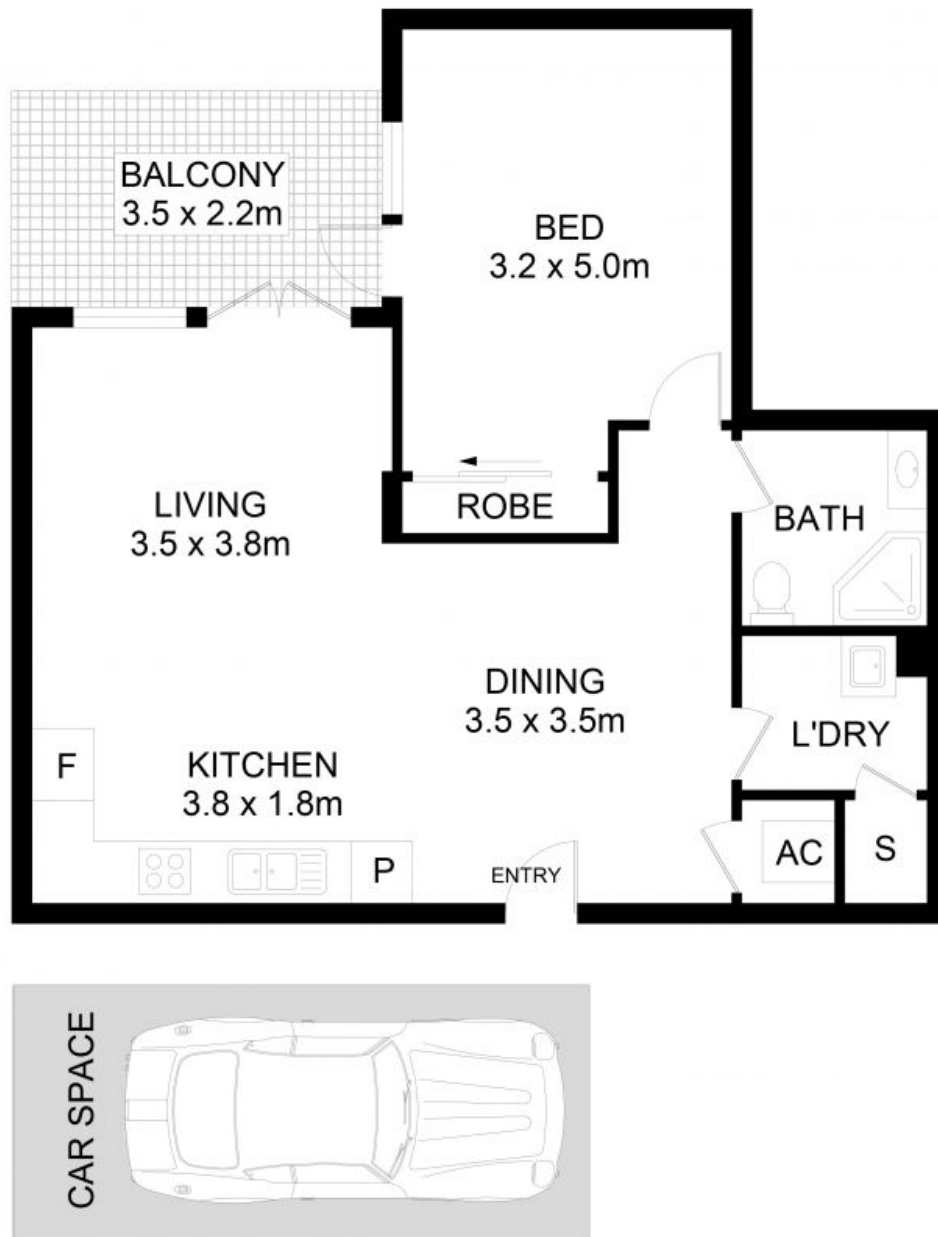
586000

Type: Apartment
Sold Date: 11/05/2022
Council Rates: \$315.00 p/q
Water Rates: \$165.00 p/q
Strata Rates: \$1,020.00 p/q



**Tim
Lapham**

0424 509 961



20/3 Bay Drive, Meadowbank

DISCLAIMER: No liability for the accuracy of details contained within our floor plans. All plans are drawn and also checked to the best of our ability, however information contained in our floor plans such as area calculations are approximate, and have not been surveyed or drawn to scale. Our floor plans are for representational purposes only and should be used as such. Do not attempt to refer to our floor plans for structural or detailed information.



WATERPOINT

.20/3 Bay Drive, Meadowbank NSW