



Sydney Olympic Park , NSW



Superb Location | Boomerang Tower

Apply Now via | <https://t-app.com.au/wam>

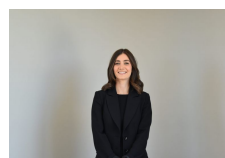
Situated in the heart of Sydney Olympic Park and surrounded by hectares of parklands, playgrounds, restaurants and world class sporting venues, these spectacular apartments will be the envy of many and are truly breathtaking. This luxurious property comes with a study room, 2 side-by-side car spaces and a storage cage.

Luxury Penthouse Finishes and Features include

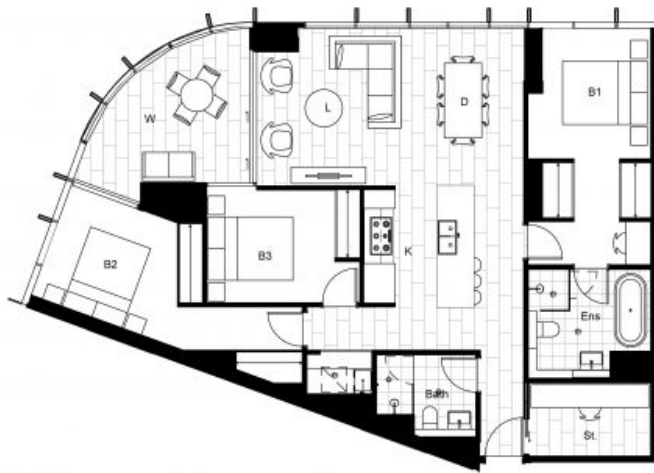
- European Stainless Steel Appliances
- Video Security Intercom
- Designer Kitchens with Stone Benches & Large Drawer Sets
- Built-in Wardrobes
- Air-Conditioning
- Internal Storage

\$975 pw

Type: Apartment
Date Available: 16/01/2023



**Danielle
Gersbach**



a. PCA Method of Measurement in accordance with the Property Council of Australia's 'PCA Method'. See also the draft area plan. b. Figure. The figure is different for every apartment. Marketing floor plans show a single typical layout configuration for an apartment and should not be used to determine the position of layout elements. The building information plans should be cross-referenced by the purchaser to confirm the position of the various layout elements for each apartment. c. See also the draft area plan. d. The plan area includes area in circulation and is measured as a guide only. Elevation and is subject to change by developer. Please refer to our Contract for Sale for a list of inclusions with the property. Furnishings shown are indicative only and are not included. e. The plan area includes area in circulation and is measured as a guide only. Elevation and is subject to change by developer. Please refer to our Contract for Sale for a list of inclusions with the property. Furnishings shown are indicative only and are not included. f. The plan area includes area in circulation and is measured as a guide only. Elevation and is subject to change by developer. Please refer to our Contract for Sale for a list of inclusions with the property. Furnishings shown are indicative only and are not included. We exclude all related or implied terms, conditions and warranties arising out of this document and any liability for loss or damage arising therefrom.



BOOMERANG
ON OLYMPIC BOULEVARD

3 Olympic Boulevard
Sydney Olympic Park

Apartment Type
Apartment Type 3B-A
3 Bedroom + Study

Lakeside
1504 | 1604 | 1704
1804 | 1904 | 2004
2104 | 2304 | 2404
2504 | 2604

Cityscape
2704 | 2804 | 2904
3004 | 3104 | 3204
3304 | 3404 | 3504

Size	NSA	PCA
Internal area	106	115
Wingarden area	13	15
total area (sqm)	119	130
carspaces	2	



"The tallest all north facing residential building in Australia designed with 100% solar access"