



Ryde , NSW



What more do you want??

This spectacular 1 bedroom apartment features a prime east aspect and views towards Parramatta River. Proudly built by Holdmark this property and is ideal as a permanent residence or as an investment opportunity.

Boasting premium fixtures and fittings as well as a modern open plan configuration, which flow from a designer kitchen through to an undercover entertainers balcony, this property is perfect for those wanting an effortless, low maintenance lifestyle.

Featuring soft natural tones & a premium location, this apartment will not last long!

PROPERTY FEATURES

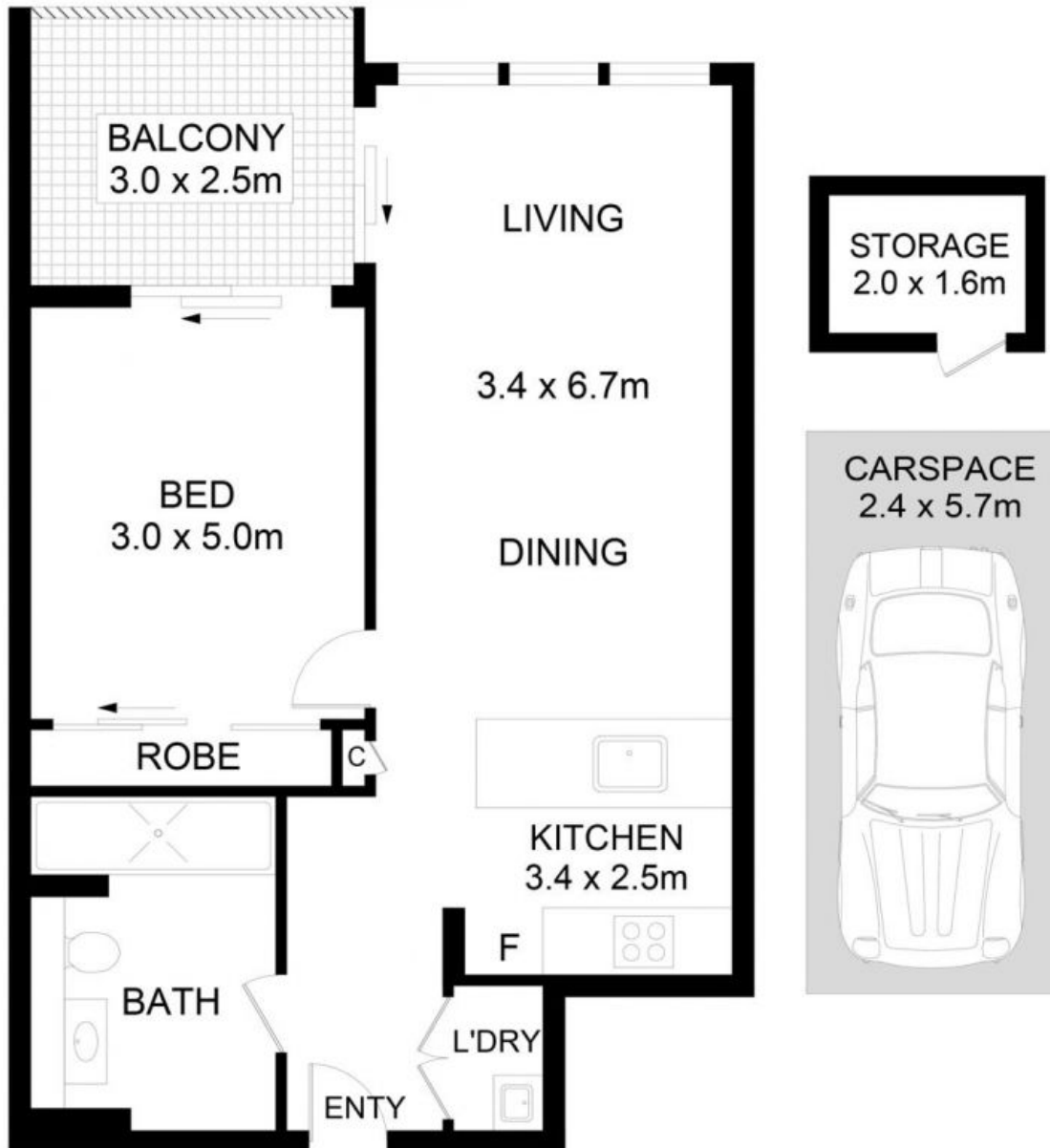
- Open Plan Design

585000

Type: Apartment
Sold Date: 02/12/2022
Council Rates: \$316.00 p/q
Water Rates: \$75.00 p/q
Strata Rates: \$958.00 p/q



Tim Lapham
0424 509 961



704/6 Nancarrow Avenue, Ryde

DISCLAIMER: No liability for the accuracy of details contained within our floor plans. All plans are drawn and also checked to the best of our ability, however information contained in our floor plans such as area calculations are approximate, and have not been surveyed or drawn to scale. Our floor plans are for representational purposes only and should be used as such. Do not attempt to refer to our floor plans for structural or detailed information.



WATERPOINT

704C/6 Nancarrow Avenue, Ryde NSW