



Sydney Olympic Park , NSW

2 2 1

North Facing, Large Floorplan - Gold Medal Winner!

The combination of its panoramic views, large internal space, extra large balcony, highly desired north aspect and its excellent condition gives this apartment great appeal to owner occupiers and also strong in the market for investors.

Located in the heart of Sydney Olympic Park, mere footsteps from the cycle and walking paths, bicentennial park, world class sporting venues, train station, ferries, buses, restaurant precincts and a short walk to the new IGA supermarket.

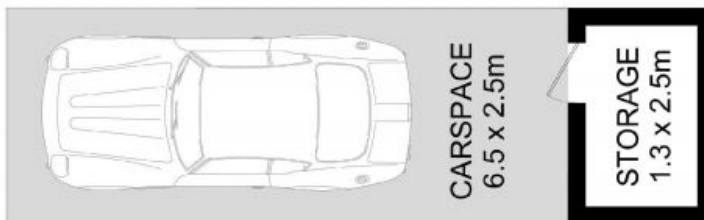
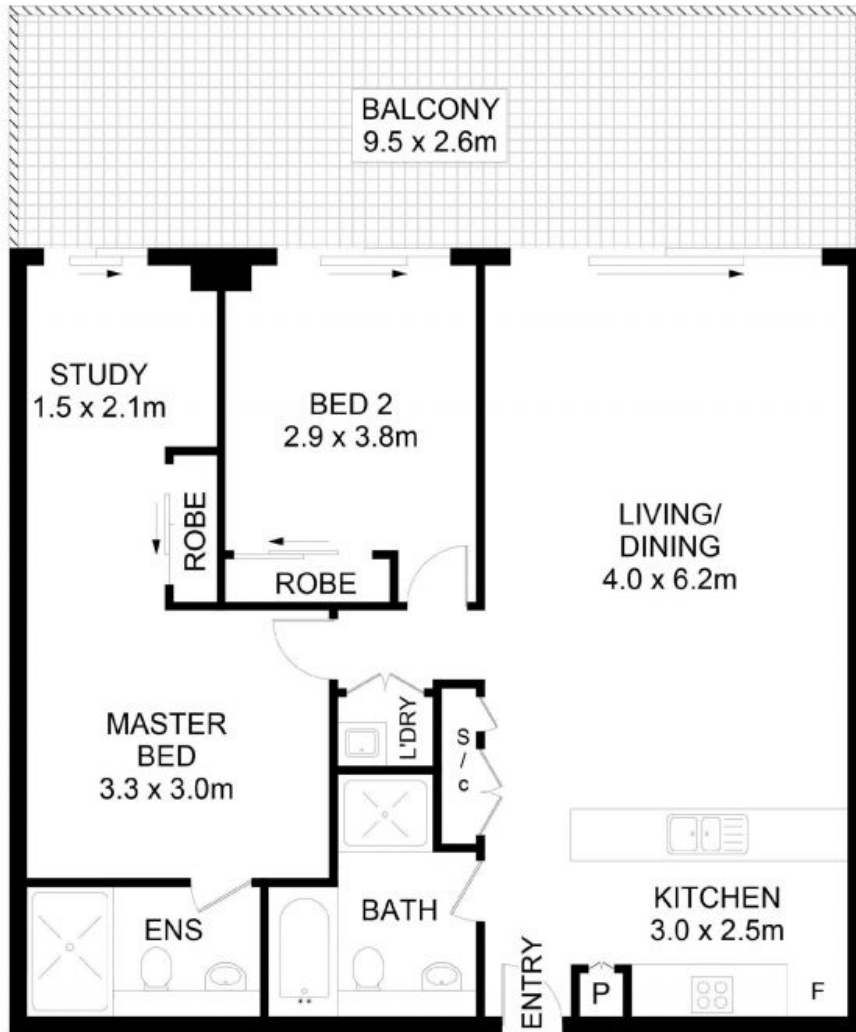
Features include:

- Double bedrooms with built-ins, its huge master has sunny study alcove and access to balcony

\$695,000

Type: Apartment
Sold Date: 09/11/2022

David Woods
0406788488



11 Australia Avenue, Sydney Olympic Park

DISCLAIMER: No liability for the accuracy of details contained within our floor plans. All plans are drawn and also checked to the best of our ability, however information contained in our floor plans such as area calculations are approximate, and have not been surveyed or drawn to scale. Our floor plans are for representational purposes only and should be used as such. Do not attempt to refer to our floor plans for structural or detailed information.



902/11 Australia Avenue, Sydney Olympic Park NSW