



\*DIGITALLY FURNISHED



\*DIGITALLY FURNISHED



Sydney Olympic Park , NSW

5 3 3

### Under Contract

This unique residence offers a stunning 220 sqm of approx internal space, breath taking north facing vistas & a quality designed fit out.

Perfectly positioned and overlooking Sydney Olympic Park, this superb home is minutes to main artery roads & multiple shopping precincts including, Strathfield, Rhodes & Lidcombe.

Featuring a rare 5-bedroom, 3-bathroom, 3-car configuration, ideal proportions & unparalleled views, this home is a must see.

Property Features Include:

- 900mm SMEG cooktop, oven & rangehood
- SMEG dishwasher & microwave
- Side by Side Parking (2)
- Stone Bench Tops

### Under Contract

**Type:** Apartment  
**Sold Date:** 13/07/2023

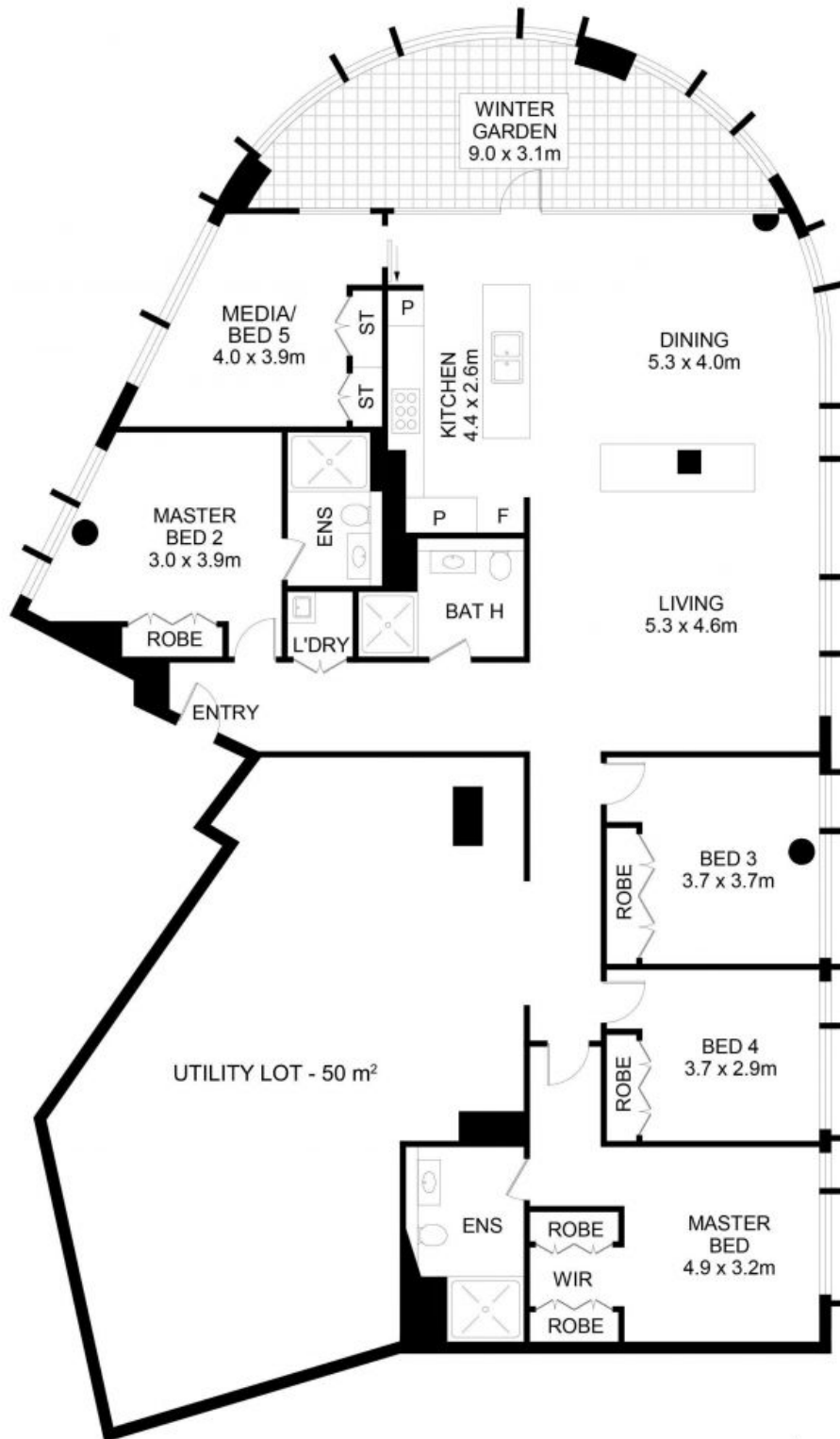


**Louie Bechara**

0414 432 007

**Tim Lapham**

0424 509 961



## 3801/3 Olympic Boulevard, Sydney Olympic Park

DISCLAIMER: No liability for the accuracy of details contained within our floor plans. All plans are drawn and also checked to the best of our ability, however information contained in our floor plans such as area calculations are approximate, and have not been surveyed or drawn to scale. Our floor plans are for representational purposes only and should be used as such. Do not attempt to refer to our floor plans for structural or detailed information.



WATERPOINT