



Sydney Olympic Park , NSW



Prime Position | Superb Views

This spectacular & prime north facing 1 bedroom apartment, features a corner aspect and sweeping views over Olympic Park & towards the Harbour Bridge. Proudly built by Billbergia, this home is ideal as a permanent residence or investment opportunity.

Boasting a newly renovated and modern open plan configuration, which flow from a designer kitchen through to an enclosed winter garden perfect for entertaining.

If you are looking for effortless, low maintenance lifestyle or an investment opportunity, this property is for you.

Featuring soft natural tones & a premium location, this apartment will not last long!

592500

Type: Apartment
Sold Date: 28/02/2023
Council Rates: \$300.00 p/q
Water Rates: \$160.00 p/q
Strata Rates: \$1,177.00 p/q

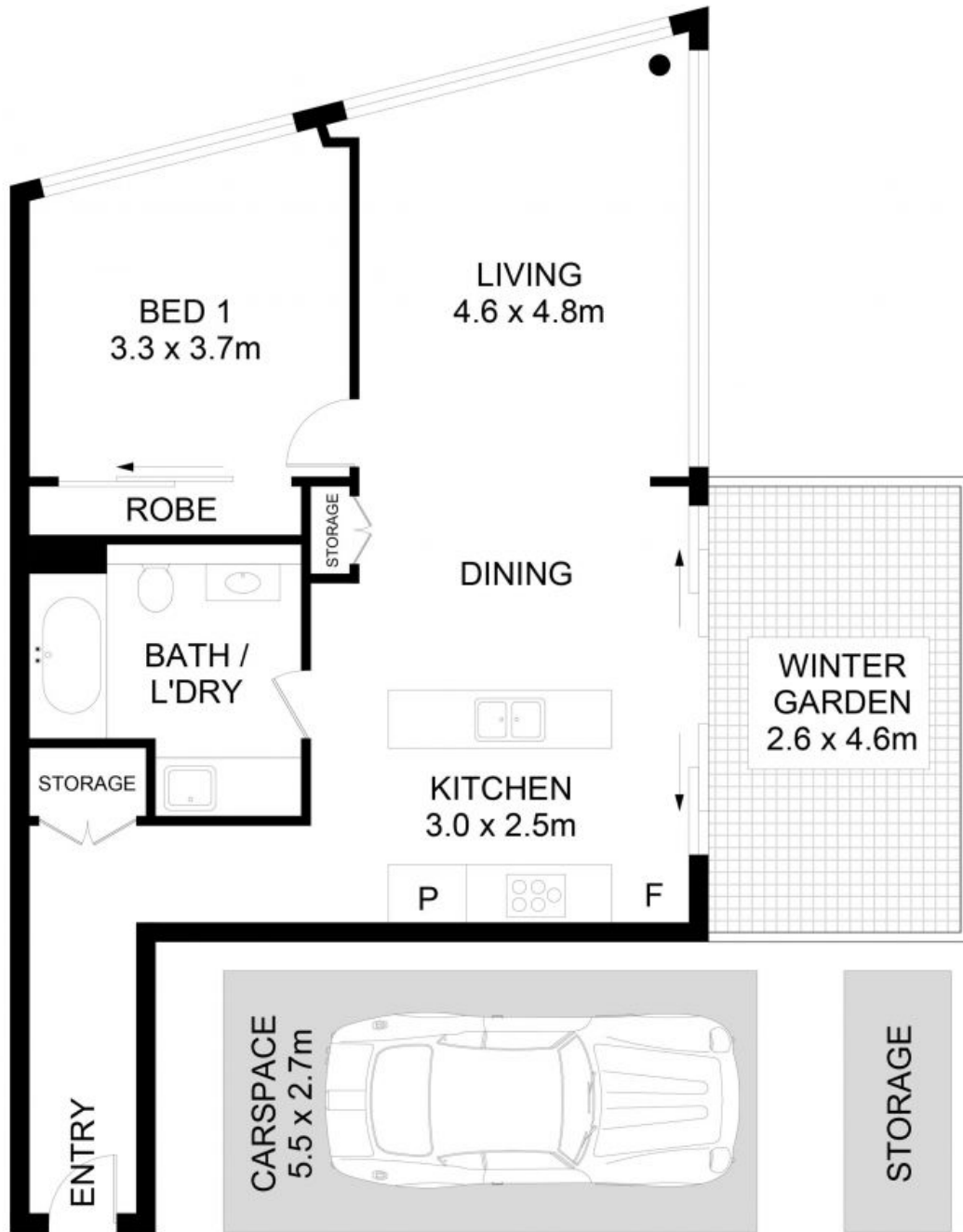


Tim Lapham

0424 509 961



Danielle Gersbach



901/11 Australia Avenue, Sydney Olympic Park

DISCLAIMER: No liability for the accuracy of details contained within our floor plans. All plans are drawn and also checked to the best of our ability, however information contained in our floor plans such as area calculations are approximate, and have not been surveyed or drawn to scale. Our floor plans are for representational purposes only and should be used as such. Do not attempt to refer to our floor plans for structural or detailed information.



901/11 Australia Avenue, Sydney Olympic Park NSW