

Zetland , NSW



Prime Location | 2-Storey Apartment

Perfectly positioned in the 'APEX' development & just steps away from the East Village precinct and surrounding businesses, this spectacular apartment features a 2-storey configuration and a cross flowing east/west direction which maximizes air flow and natural light to the property.

Enjoy multiple aspects to leafy districts views & a style of sophistication that is designed to suit the individuality of your lifestyle.

Property Features:

- Sun filled living area with sky lights.
- Entertainer's balcony with leafy outlook
- Designer kitchen with stainless steel appliances
- Onsite Building Manager
- Security Entrance & Lift Access
- Spacious bedrooms

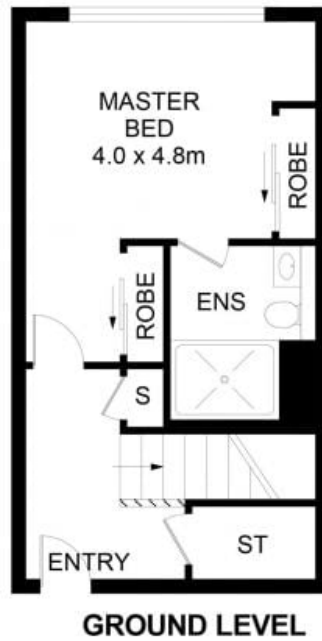
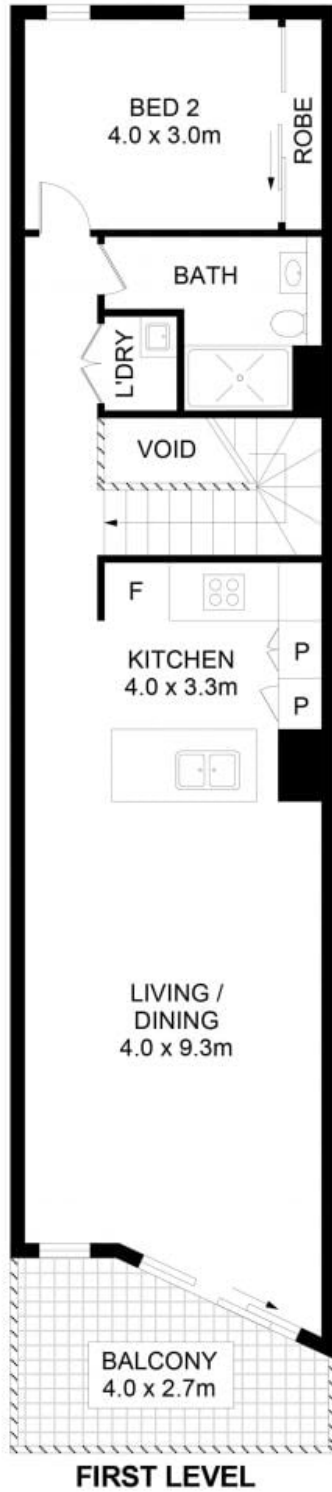
946000

Type: Apartment
Sold Date: 10/05/2023
Council Rates: \$290.00 p/q
Water Rates: \$170.00 p/q
Strata Rates: \$1,767.00 p/q



**Tim
Lapham**

0424 509 961



139/6A Defries Avenue, Zetland

DISCLAIMER: No liability for the accuracy of details contained within our floor plans. All plans are drawn and also checked to the best of our ability, however information contained in our floor plans such as area calculations are approximate, and have not been surveyed or drawn to scale. Our floor plans are for representational purposes only and should be used as such. Do not attempt to refer to our floor plans for structural or detailed information.



139/6C Defries Avenue, Zetland NSW