



Zetland , NSW

1 1

PERFECT STARTER!!

Situated in the highly sought after Apex Development in Zetland, this superb apartment offers a modern open plan, which flows from kitchen through to lounge & outdoor balcony.

Perfectly designed to incorporate ample natural light from a spectacular use of windows this apartment is a must for the savvy investor OR first home buyer.

The Apex development is highly sought after, due to its premium location to the CBD and sporting venues.

Luxury Finishes and Features

- Stainless Steel Appliances, including dishwasher
- Security Intercom

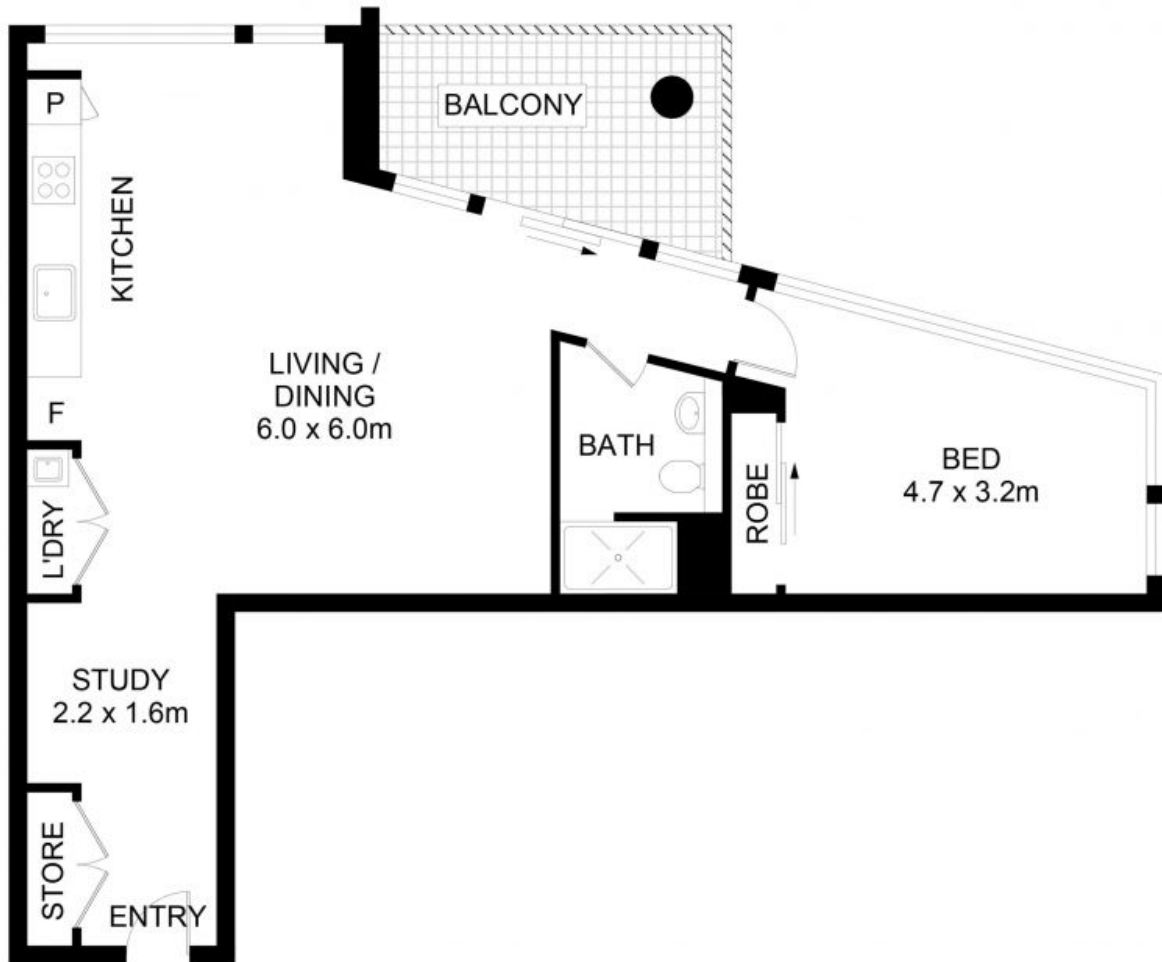
635000

Type: Apartment
Sold Date: 22/06/2023
Council Rates: \$290.00 p/q
Water Rates: \$163.00 p/q
Strata Rates: \$1,207.00 p/q



Tim Lapham

0424 509 961



17/6A Defries Avenue, Zetland

DISCLAIMER: No liability for the accuracy of details contained within our floor plans. All plans are drawn and also checked to the best of our ability, however information contained in our floor plans such as area calculations are approximate, and have not been surveyed or drawn to scale. Our floor plans are for representational purposes only and should be used as such. Do not attempt to refer to our floor plans for structural or detailed information.



17/6A Defries Avenue, Zetland NSW