



Meadowbank , NSW



Rare Configuration

Looking for a modern and convenient apartment that has everything you need? Look no further than this immaculately presented 2-bedroom, 1 bathroom, 1 car apartment located above Shepherd Bay Village Plaza, next to the ferry wharf, bus and train station.

As soon as you step inside, you'll be impressed by the open plan lounge and dining area, complete with doors leading out to a north-facing balcony.

The kitchen is fully equipped with all the appliances you need, including an Ilve multi-function dishwasher, an Ilve fan forced multi-function oven, an Ilve 4 burner gas cooktop with wok burner, & microwave.

This apartment also boasts a range of conveniences to make your life easier, including video security intercom, lift access, and a secure underground carpark.

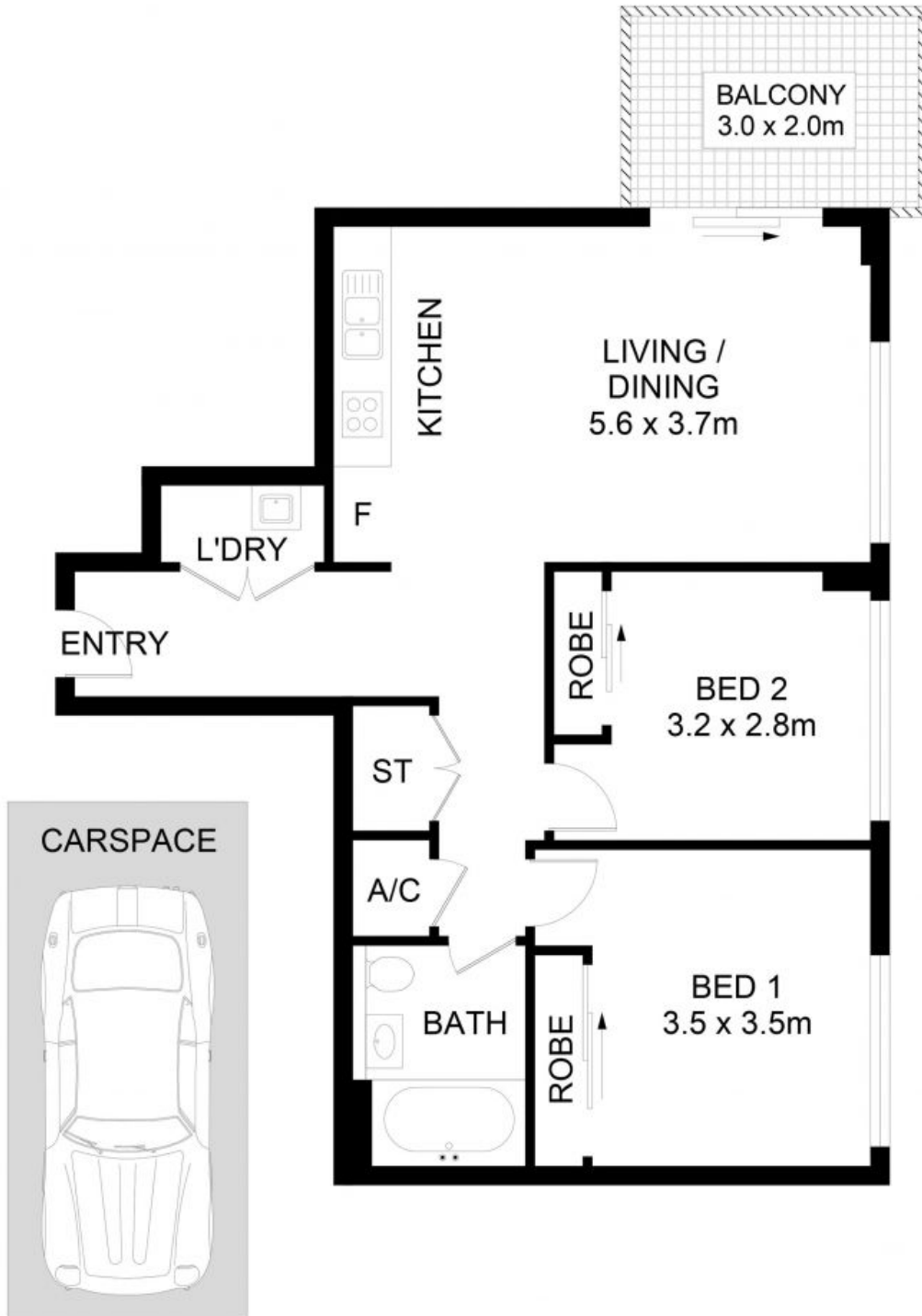
643000

Type: Apartment
Sold Date: 27/07/2023
Council Rates: \$315.00 p/q
Water Rates: \$165.00 p/q
Strata Rates: \$1,250.00 p/q



Tim Lapham

0424 509 961



61/11 Bay Drive, Meadowbank

DISCLAIMER: No liability for the accuracy of details contained within our floor plans. All plans are drawn and also checked to the best of our ability, however information contained in our floor plans such as area calculations are approximate, and have not been surveyed or drawn to scale. Our floor plans are for representational purposes only and should be used as such. Do not attempt to refer to our floor plans for structural or detailed information.



61/11 Bay Drive, Meadowbank NSW