



WATERPOINT
ASSET MANAGEMENT



Sydney Olympic Park , NSW



SPECTACULAR APARTMENT WITH BREATHTAKING VIEWS

Discover your dream home in the heart of Sydney Olympic Park! This exquisite 3-bedroom, 2-bathroom, 2-car apartment offers a luxurious and modern living experience like no other. With breath-taking panoramic views over Bi-Centennial Park and the stunning Sydney CBD skyline, you'll wake up to a picturesque landscape every single day!

Property Highlights:

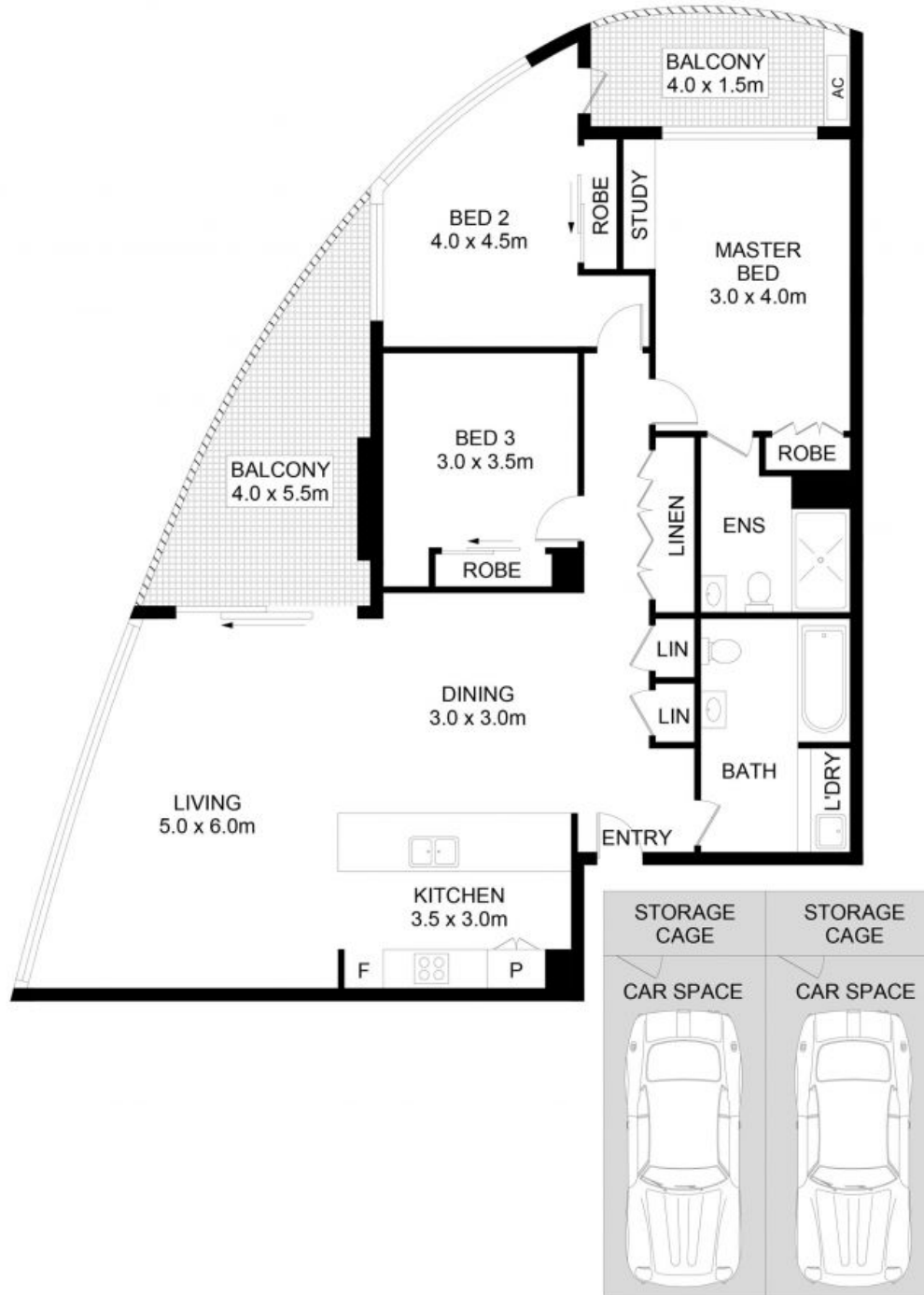
- Spacious 3 Bedrooms - Perfect for families or individuals seeking extra space.
- 2 Luxurious Bathrooms with Elegant Marble Finishes - Unwind and relax in style.
- Sunlit Living Areas - Natural light fills the entire apartment, creating a warm and inviting ambiance.

\$1,000 pw

Type: Apartment

Date Available: 25/10/2023

**Rental
Team**



1607/7 Australia Avenue, Sydney Olympic Park

DISCLAIMER: No liability for the accuracy of details contained within our floor plans. All plans are drawn and also checked to the best of our ability, however information contained in our floor plans such as area calculations are approximate, and have not been surveyed or drawn to scale. Our floor plans are for representational purposes only and should be used as such. Do not attempt to refer to our floor plans for structural or detailed information.



WATERPOINT

1607/7 Australia Avenue, Sydney Olympic Park NSW