



*DIGITALLY FURNISHED



Meadowbank , NSW

3 2 2

Luxurious Waterfront Living in Meadowbank

Welcome to your dream home nestled on the edge of Shepherds Bay, offering a perfect blend of high-quality construction, sophisticated finishes, and breath-taking water/park views that will never be obstructed. This house-like scale residence spans an impressive 184 sqm on title, providing an unparalleled living experience.

Key Features:

Size: 184 sqm total on title

Views: Never-to-be-built-out water/park views

Location: Prime location on the edge of Shepherds Bay

Interior Highlights:

Open Living: Spacious open living areas seamlessly connect to an inviting alfresco terrace, creating a perfect space for entertaining and relaxation.

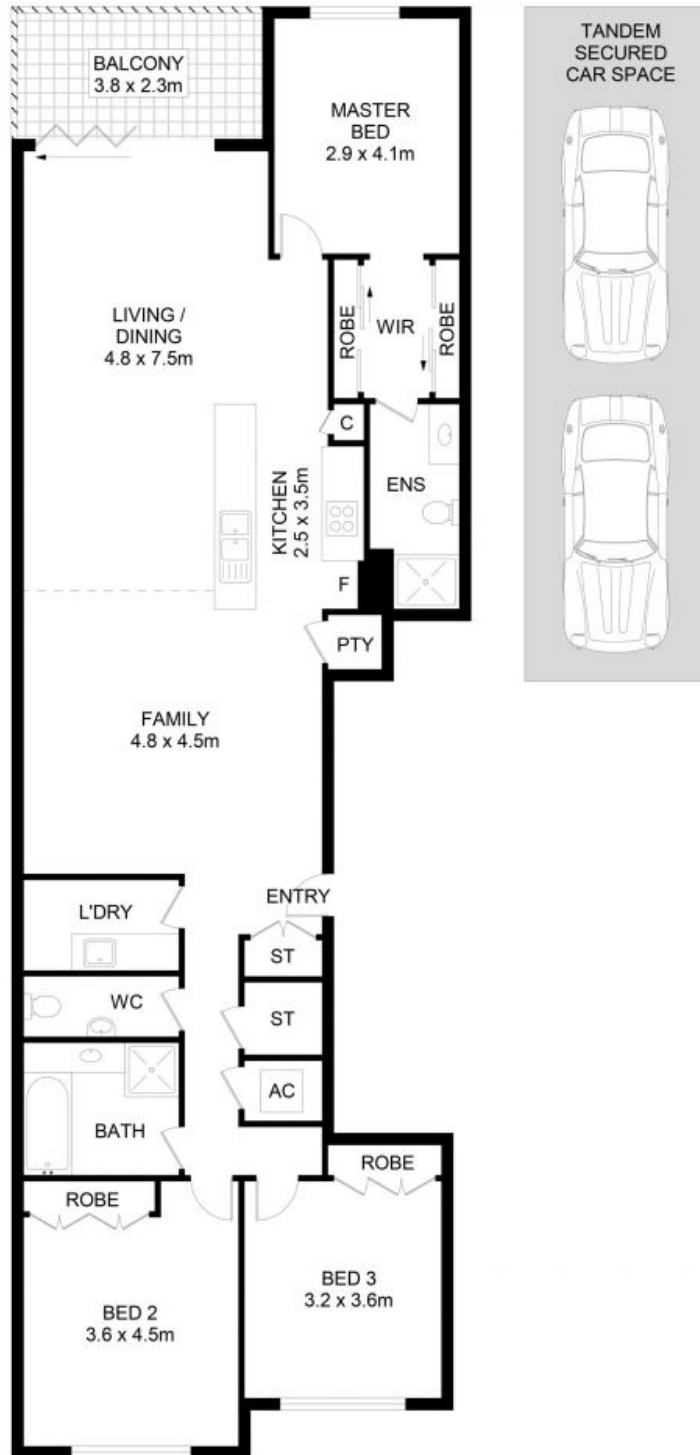
By Negotiation | Contact Agent

Type: Apartment



Tim Lapham

0424 509 961



23/2 Bay Drive, Meadowbank

DISCLAIMER: No liability for the accuracy of details contained within our floor plans. All plans are drawn and also checked to the best of our ability, however information contained in our floor plans such as area calculations are approximate, and have not been surveyed or drawn to scale. Our floor plans are for representational purposes only and should be used as such. Do not attempt to refer to our floor plans for structural or detailed information.



23/2 Bay Drive, Meadowbank NSW