



WATERPOINT
ASSET MANAGEMENT



*DIGITALLY FURNISHED

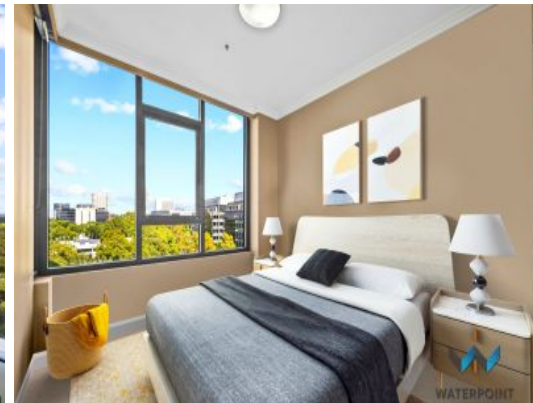
WATERPOINT



WATERPOINT



WATERPOINT



WATERPOINT

Sydney Olympic Park , NSW



Terrific Opportunity | Superb Location

Discover the ease of urban living with this stunning 1-bedroom apartment nestled in the vibrant heart of Sydney Olympic Park. Boasting a blend of contemporary design and modern comforts, this home offers the ideal sanctuary for both investors OR owner occupiers.

Property Features:

- Generously Sized Living & Bedroom for Comfortable Living
- Secure Building for Peace of Mind
- Underground Parking for Convenience and Security
- Air Conditioning for Year-Round Comfort
- Stylish Kitchen with Stone Benches and Stainless-Steel Appliances

Location Highlights:

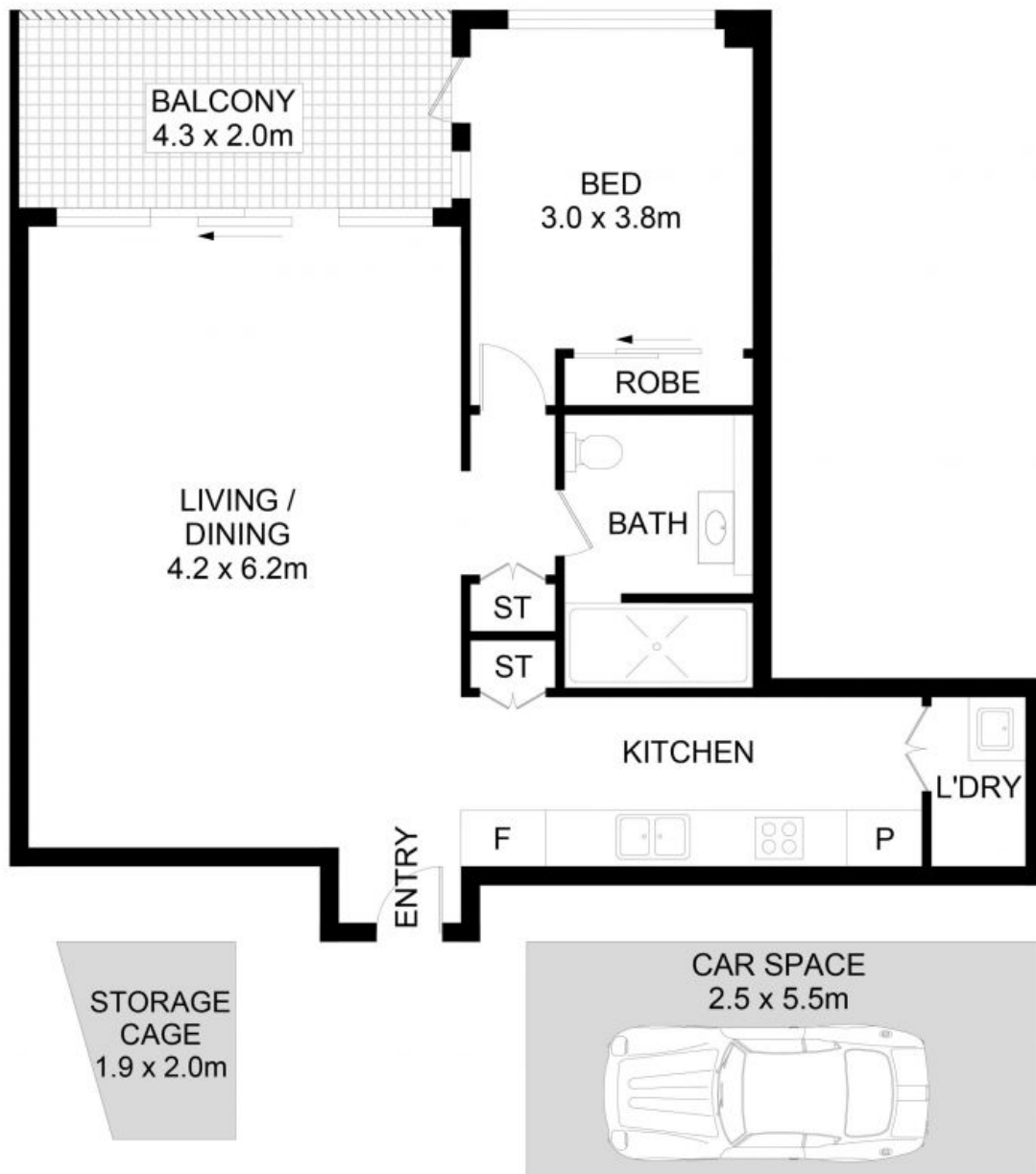
\$569,000

Type: Apartment
Inspect: Saturday, 4th May 2024 11:00 am - 11:25 am

Council Rates: \$315.00 p/q
Water Rates: \$165.00 p/q
Strata Rates: \$1,200.00 p/q



Tim Lapham
0424 509 961



705/11 Australia Avenue, Sydney Olympic Park

DISCLAIMER: No liability for the accuracy of details contained within our floor plans. All plans are drawn and also checked to the best of our ability, however information contained in our floor plans such as area calculations are approximate, and have not been surveyed or drawn to scale. Our floor plans are for representational purposes only and should be used as such. Do not attempt to refer to our floor plans for structural or detailed information.



705/11 Australia Avenue, Sydney Olympic Park NSW