



Meadowbank , NSW



Rare Configuration 2-Bedroom Apartment with Parking & Storage!

Welcome to a rare opportunity to own a stylish 2-bedroom, 1-bathroom apartment boasting unparalleled convenience and modern comfort. Located on a high floor, this gem faces the desirable north-east direction, bathing the space in natural light throughout the day.

Key Features:

- Bedrooms: 2
- Bathrooms: 1
- Parking: 1
- Storage: Secure storage cage provided

Prime Location:

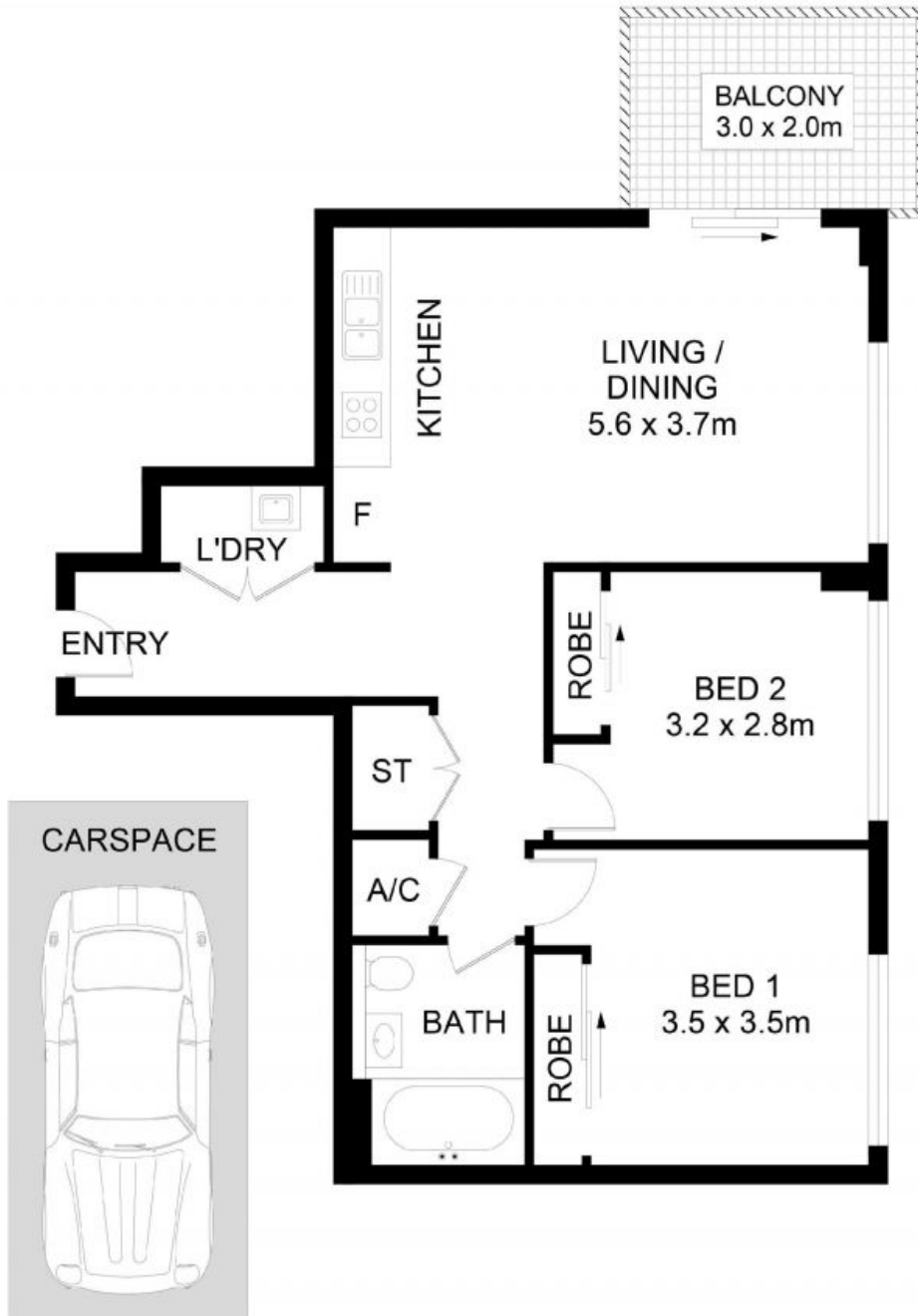
\$699,000

Type: Apartment
Inspect: Saturday, 4th May 2024 1:30 pm - 2:00 pm

Council Rates: \$315.00 p/q
Water Rates: \$165.00 p/q
Strata Rates: \$1,250.00 p/q



Tim Lapham
0424 509 961



69/11 Bay Drive, Meadowbank

DISCLAIMER: No liability for the accuracy of details contained within our floor plans. All plans are drawn and also checked to the best of our ability, however information contained in our floor plans such as area calculations are approximate, and have not been surveyed or drawn to scale. Our floor plans are for representational purposes only and should be used as such. Do not attempt to refer to our floor plans for structural or detailed information.



WATERPOINT

69/11 Bay Drive, Meadowbank NSW